



 stile



Interior design to color your lifestyle.

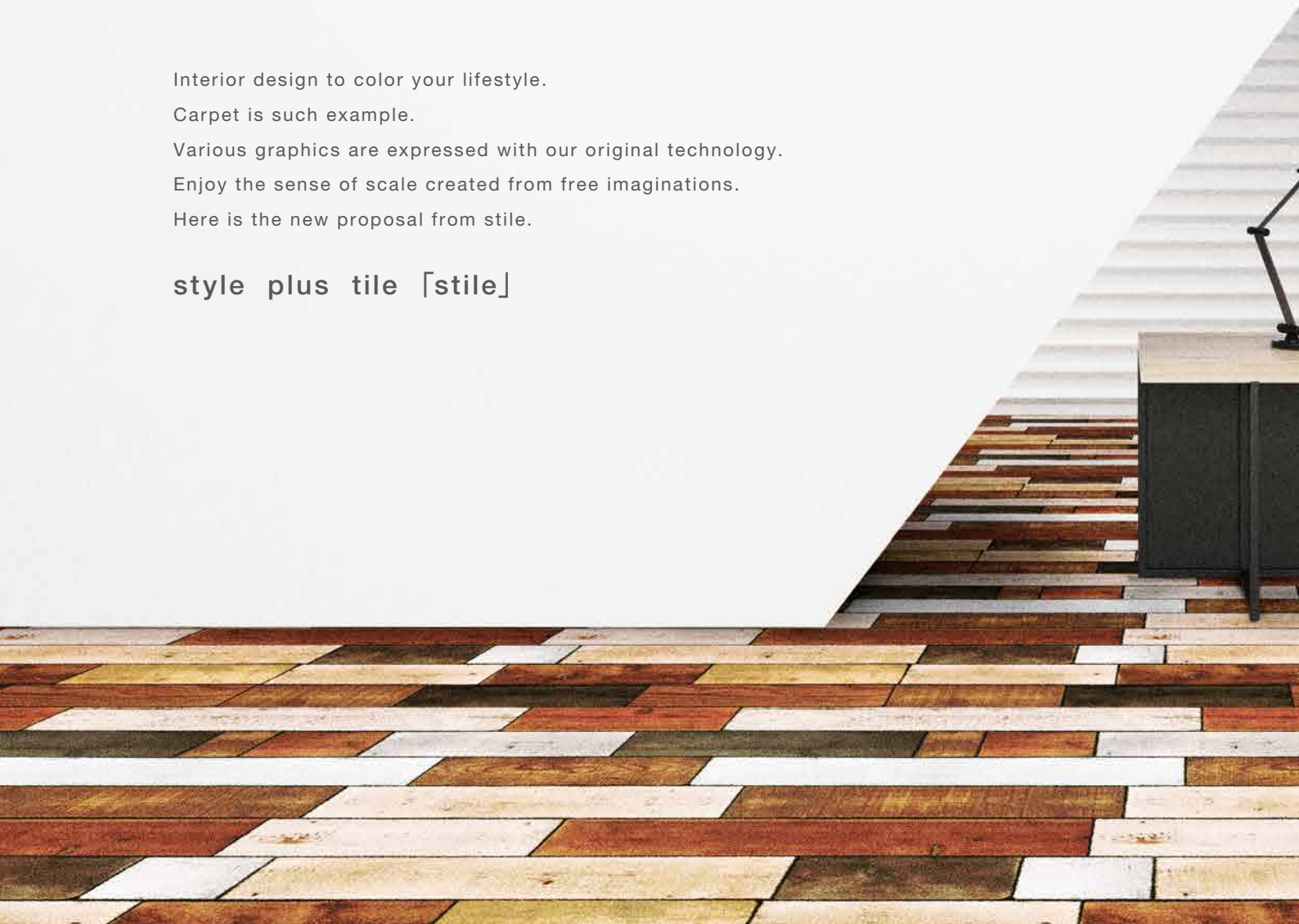
Carpet is such example.

Various graphics are expressed with our original technology.

Enjoy the sense of scale created from free imaginations.

Here is the new proposal from stile.

**style plus tile [stile]**





VN005-2

## INDEX

02 PRODUCT FEATURE

04 DESIGN INDEX

06 **DESIGNERS**



26 **AMUSEMENT**



40 **ELEGANT**



48 **COLOR**



58 **NATURE**



68 **TRADITIONAL**



78 CUSTOM ORDER SYSTEM

80 FULL ORDER SYSTEM

81 PRODUCT SPECIFICATION

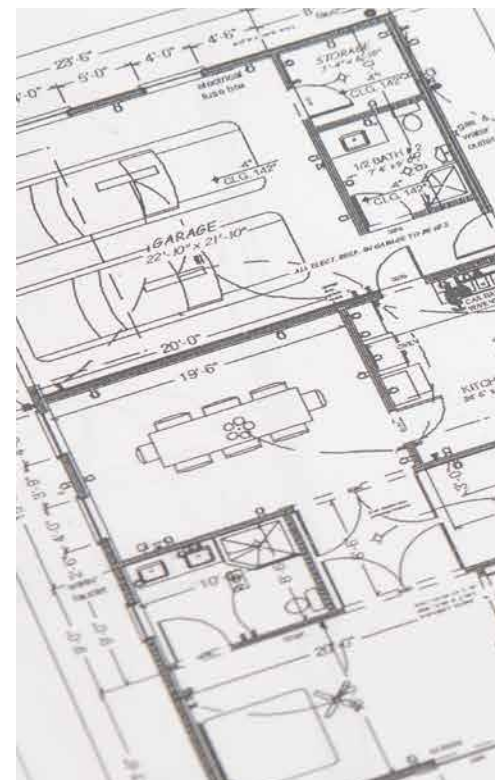
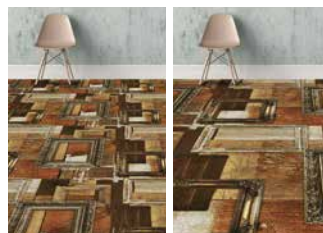




## Spreading ideas, connecting floor

Color change, up / down scaling,  
and custom order are available.

The one and only carpet tile in the world for  
you made with stile's custom / full order system.

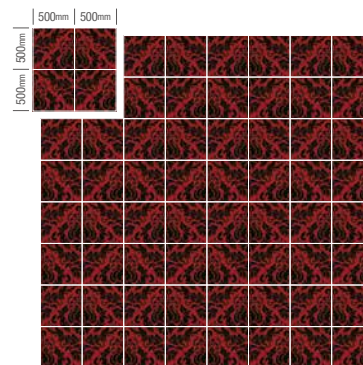




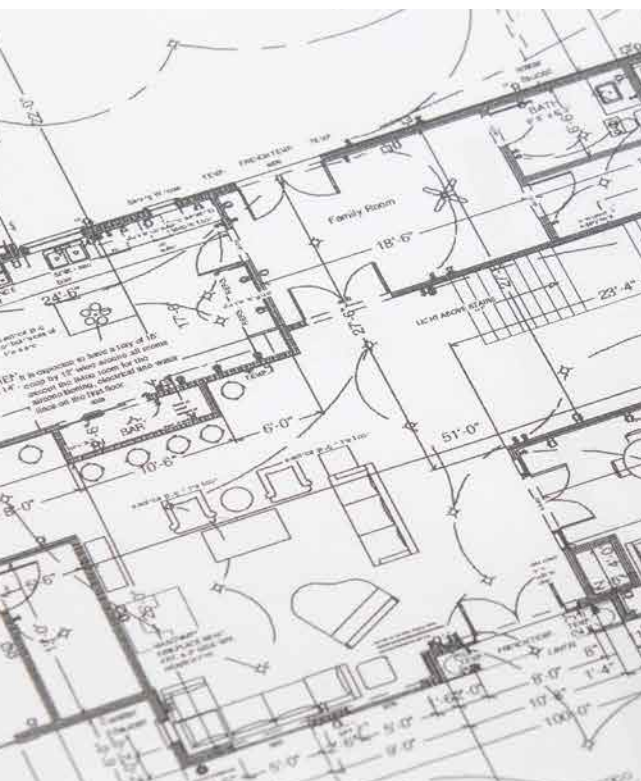


## “stile” Original Design

Comprising six themes,  
the graphic carpet invigorates the floor  
with its sense of design / scale full  
of originality customized with a variety  
of styles such as stores, office,  
commercial facility, cultural facility,  
amusement facility, hotel, etc.

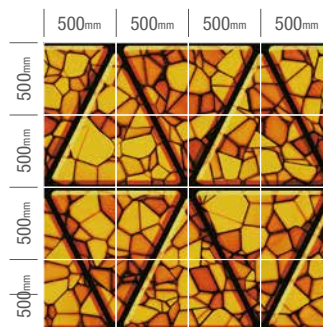


One design is complete by connecting 500 mm  
carpets. The expansion of the space is directed  
by connecting the design.

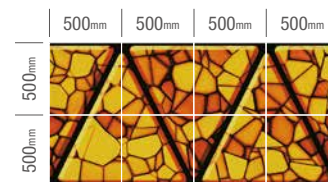


## Reliable Service, Drawing & Numbering

If you can provide a drawing, etc.,  
we can calculate the required sheets for you.  
You can order only as many as you need.  
Easy construction with carpets numbered  
on the back side along with the construction drawing.



16 sheets / repeat



We take orders with a  
combination of  
**16+8 sheets!!**

# DESIGN INDEX

## stile 01 DESIGNERS



DYS001 DYS002 DYS003 DYS004



DYA001 DYA002 DYA003 DYA004



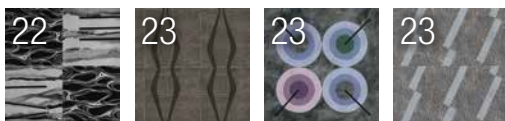
DYY001 DYY002 DYY003 DYY004



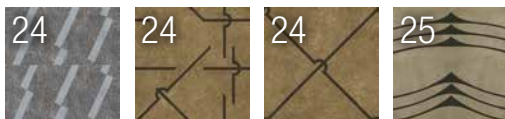
DYW001 DYW002 DYW003 DYW004



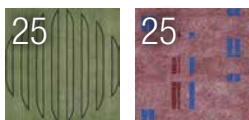
DYW005 DYW006 DYW007 DYW008



DYW009 DYK001 DYK002 DYK003



DYK004 DYK005 DYK006 DYK007



DYK008 DYK009

## stile 02 AMUSEMENT



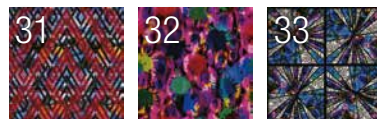
VA001-1 VA001-2 VA001-3



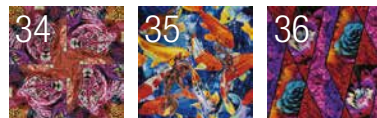
VA002-1 VA002-2 VA002-3



VA003-1 VA003-2 VA003-3



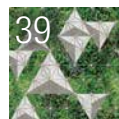
VA004 VA005 VA006



VA007 VA008 VA009-1

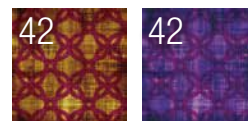


VA009-2 VA010 VA011

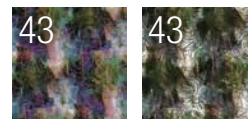


VA012

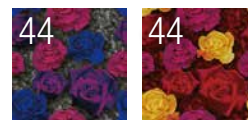
## stile 03 ELEGANT



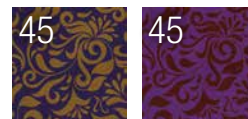
VE001-1 VE001-2



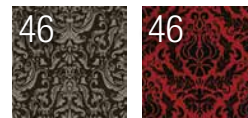
VE002-1 VE002-2



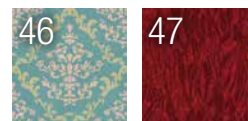
VE003-1 VE003-2



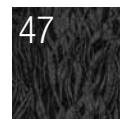
VE004-1 VE004-2



VE005-1 VE005-2



VE005-3 VE006-1



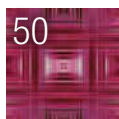
VE006-2



stile 04 COLOR



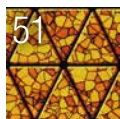
VC001-1



VC001-2



VC001-3



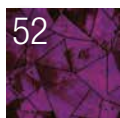
VC002-1



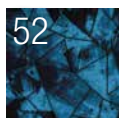
VC002-2



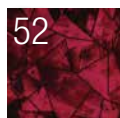
VC002-3



VC003-1



VC003-2



VC003-3



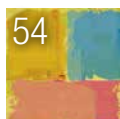
VC004-1



VC004-2



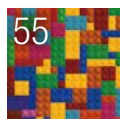
VC004-3



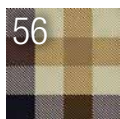
VC005-1



VC005-2



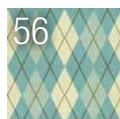
VC006



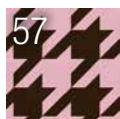
VC007-1



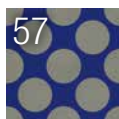
VC007-2



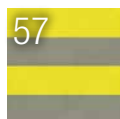
VC007-3



VC008-1

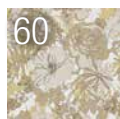


VC008-2



VC008-3

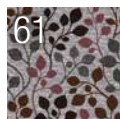
stile 05 NATURE



VN001-1



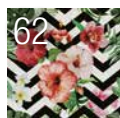
VN001-2



VN002-1



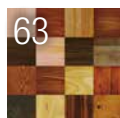
VN002-2



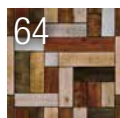
VN003



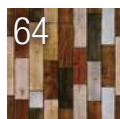
VN004-1



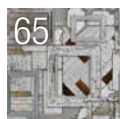
VN004-2



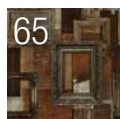
VN005-1



VN005-2



VN006-1



VN006-2

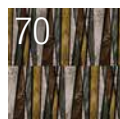


VN007

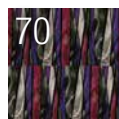


VN008

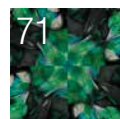
stile 06 TRADITIONAL



VT001-1



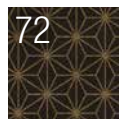
VT001-2



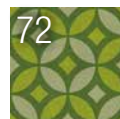
VT002-1



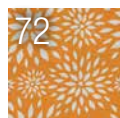
VT002-2



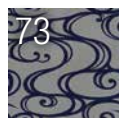
VT003-1



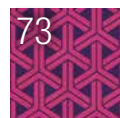
VT003-2



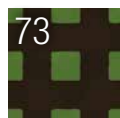
VT003-3



VT004-1



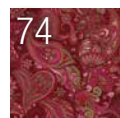
VT004-2



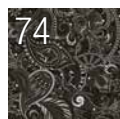
VT004-3



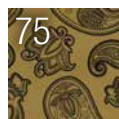
VT005-1



VT005-2



VT005-3



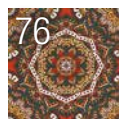
VT006-1



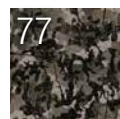
VT006-2



VT007-1



VT007-2



VT008-1



VT008-2





◇ stile 01

# DESIGNERS





## [ Designer's Concept series ]

sumi 墨 The checkered manner which controls the gap between inevitable and coincidence. It was born by imitating it. P08

aja 彩 By establishing a restriction on a behavior in addition to the checkered manner, it was born by focusing on the coincidental beauty. P12

yuu 遊 Enjoy the fun and the skill of essence by simplifying the materials scattering around you. P16

waza 技 Enjoy the resonance of different materials by combining the handwritten material and Japanese washi paper. P20

katachi 象 Enjoying the floating figure which reiterates over the background with texture. P23

### Designer Masato Yamazaki

Born and resides in Kyoto. In 1987, established the textile design office "MY.STUDIO". Continued to exhibit at the textile trade fairs in and out of the country since then. Provides designs to domestic interior manufacturers. Drawing up "Suuki" as the overseas design concept. Provided design to European interior fabrics manufacturer. In 2000, along with the business expansion and the introduction of digital production environment, the organizational name was changed to "Surface design Lab. MY.STUDIO". Since then until this day, by interpreting Surface=Interface, worked on producing graphic, binding, illustration, web design, etc. let alone textile.

## [ Designer's Joint ]

style develops designer works, graphics and art into a carpet.

Let's collaborate and create a graphic carpet  
like we have never seen before!

First Joint : Masato Yamazaki - Surface design Lab. MY.STUDIO -

\*For more contract information, contact Yokose (TEL +81-28-634-7643).



# 墨

sumi

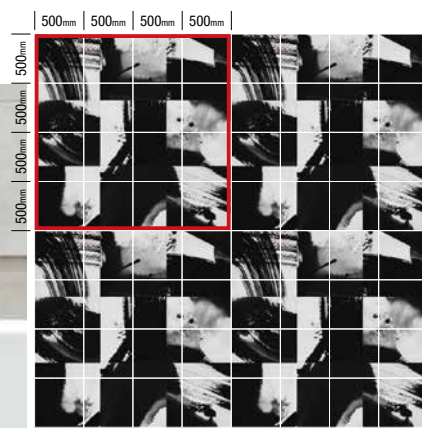
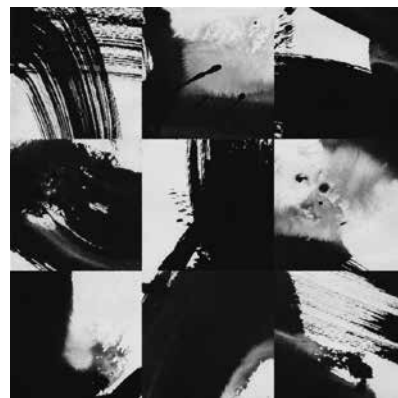
DYS001

COLOR  
CHANGE

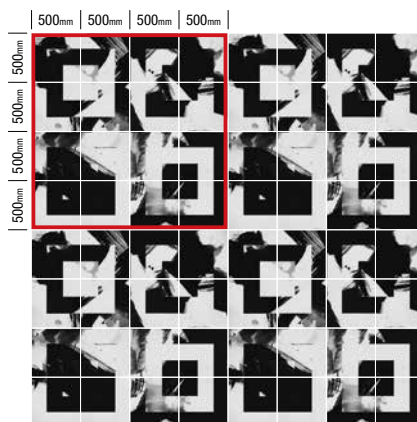
SCALE  
UP

SCALE  
DOWN

Open price (16 sheets / repeat)



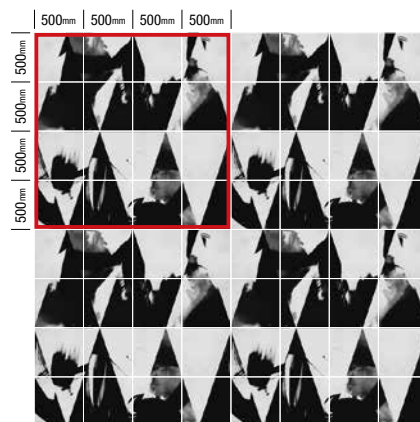




DYS002

COLOR  
CHANGESCALE  
UPSCALE  
DOWN

Open price (16 sheets / repeat)



DYS003

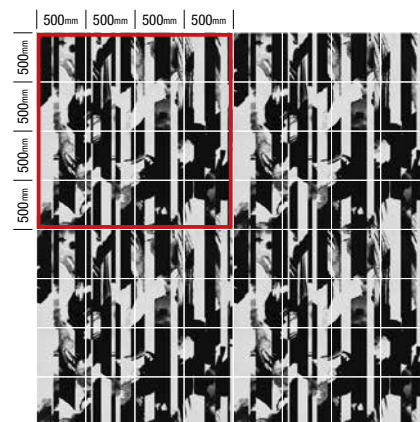
COLOR  
CHANGESCALE  
UPSCALE  
DOWN

Open price (16 sheets / repeat)

sumi

墨

DESIGNERS



DYS004

COLOR  
CHANGE

SCALE  
UP

SCALE  
DOWN

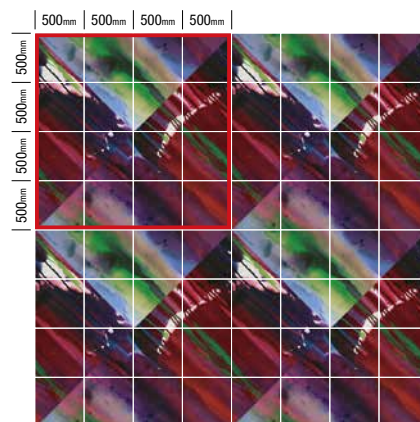
Open price (16 sheets / repeat)

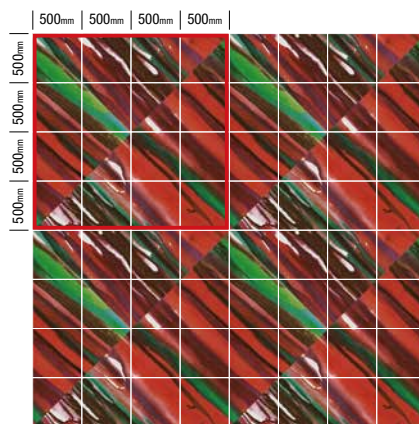


DYA001

COLOR  
CHANGESCALE  
UPSCALE  
DOWN

Open price (16 sheets / repeat)





aja

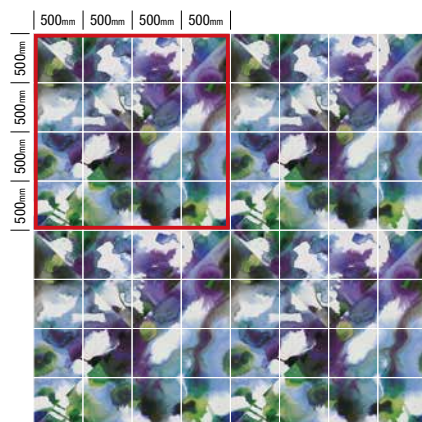
彩

DYA002

COLOR  
CHANGESCALE  
UPSCALE  
DOWN

Open price (16 sheets / repeat)





DYA003

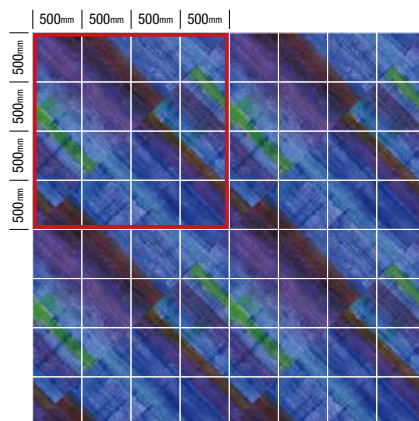
COLOR  
CHANGE

SCALE  
UP

SCALE  
DOWN

Open price (16 sheets / repeat)



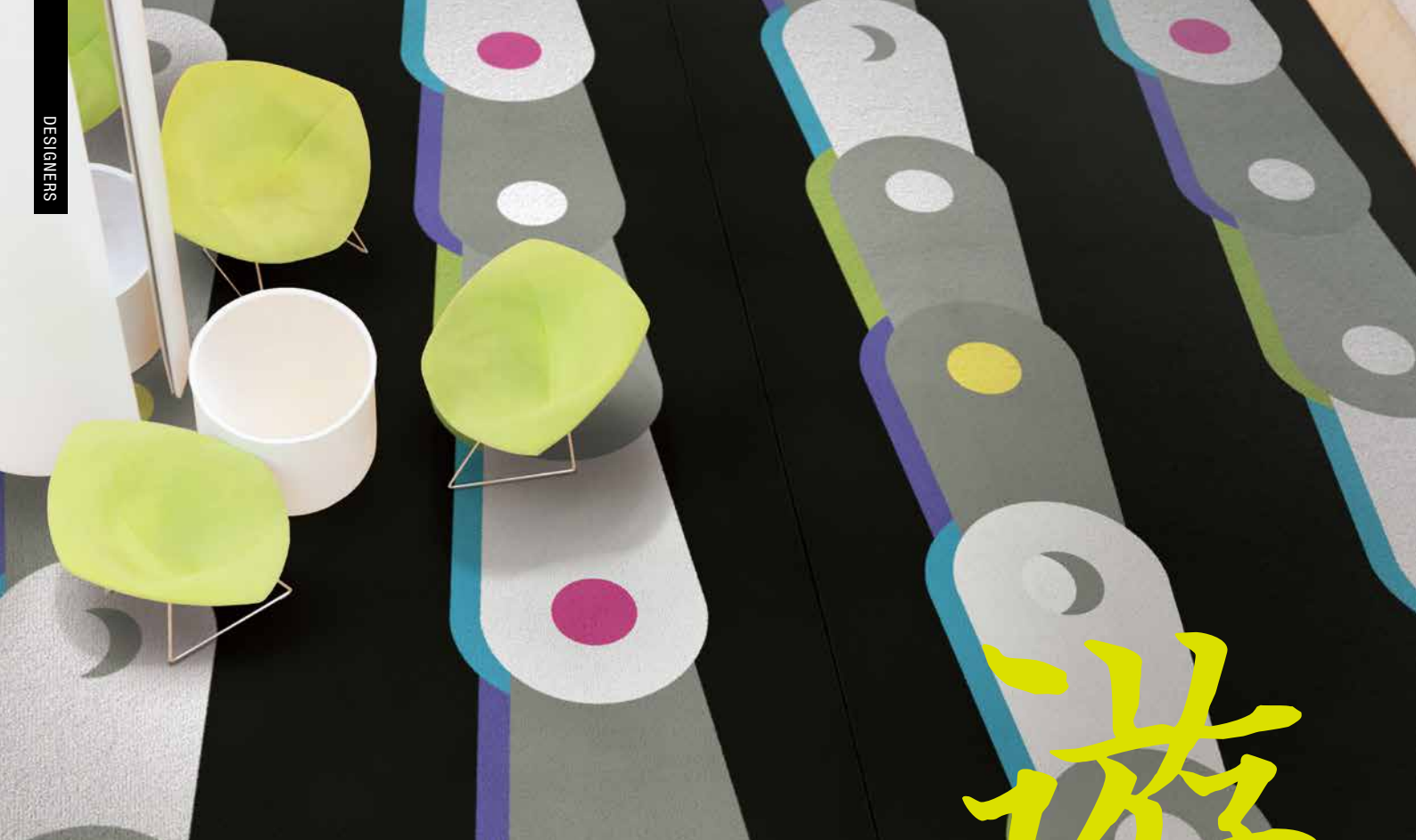


DYA004

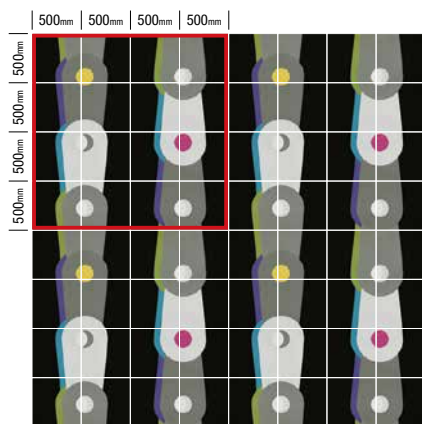
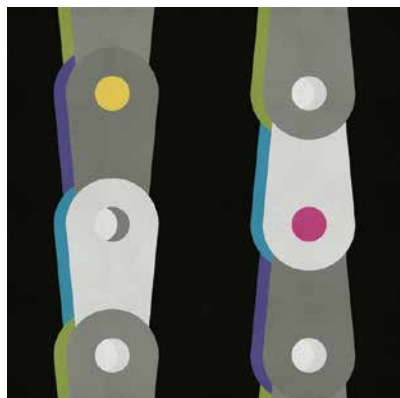
COLOR  
CHANGESCALE  
UPSCALE  
DOWN

Open price (16 sheets / repeat)





遊 yuu



DYY001

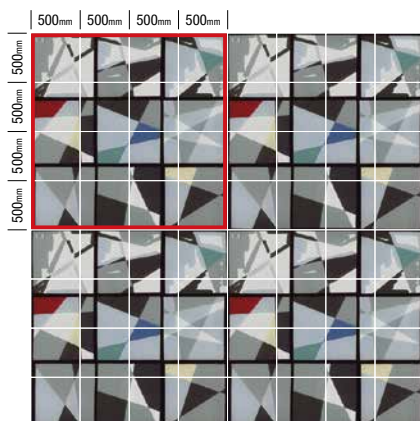


Open price (16 sheets / repeat)

DYY002

COLOR  
CHANGESCALE  
UPSCALE  
DOWN

Open price (16 sheets / repeat)





# 遊

yuu

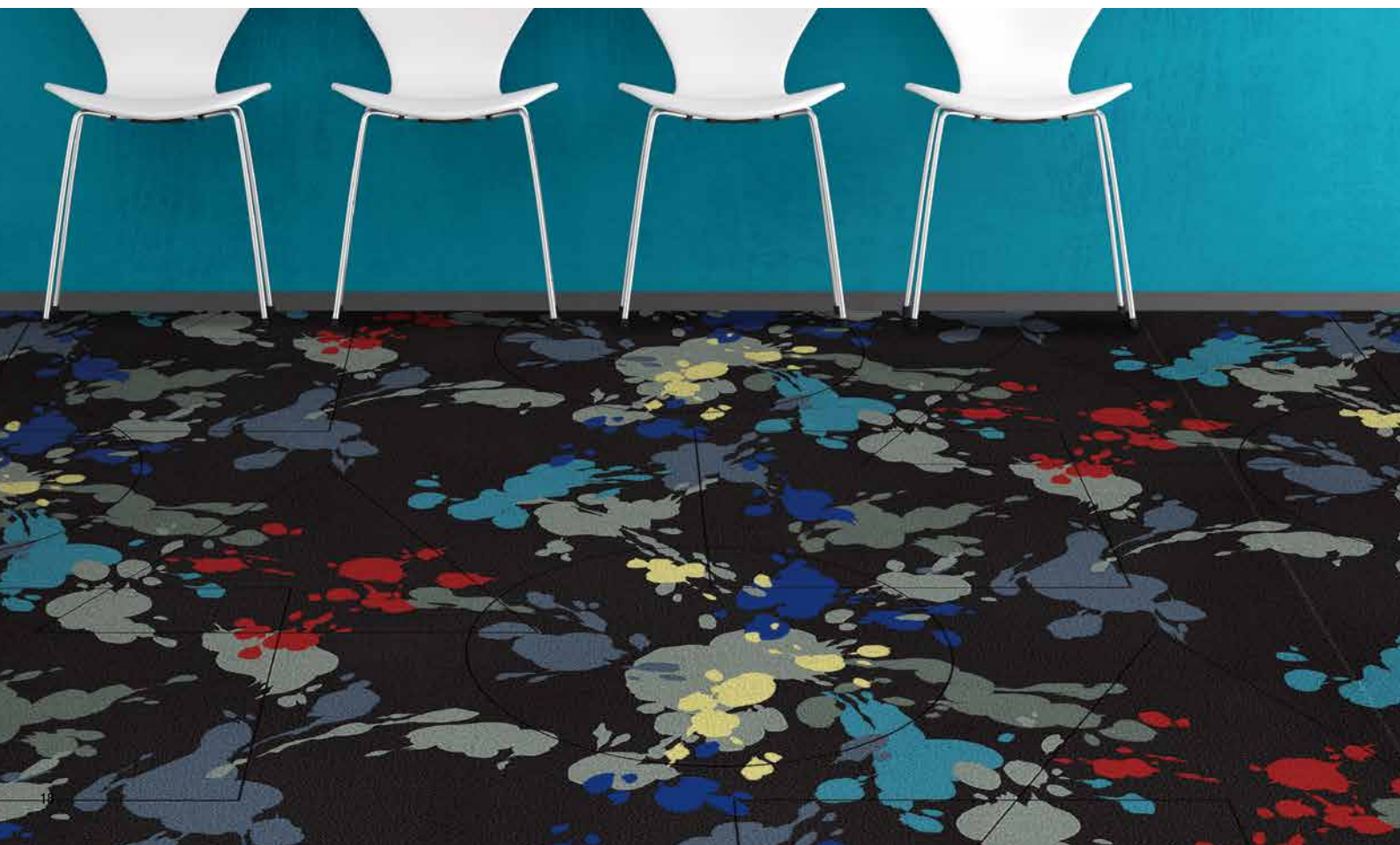
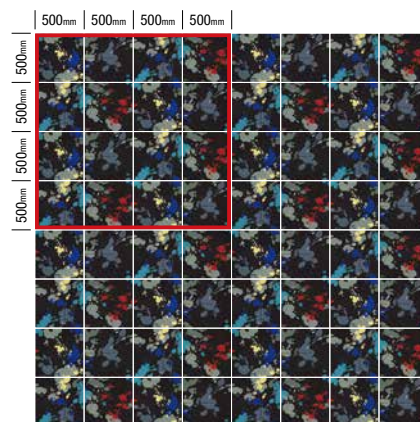
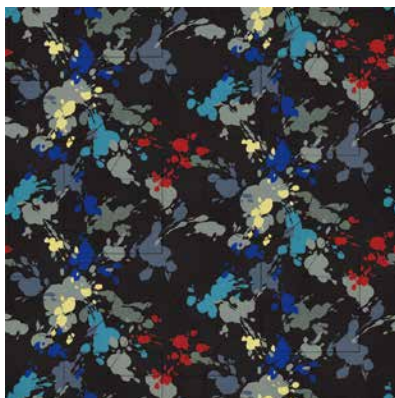
DYY003

COLOR  
CHANGE

SCALE  
UP

SCALE  
DOWN

Open price (16 sheets / repeat)



DYY004

COLOR  
CHANGE

SCALE  
UP

SCALE  
DOWN

Open price (16 sheets / repeat)

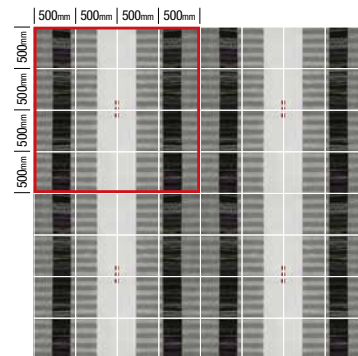


DESIGNERS





**Open price** (16 sheets / repeat)





DYW004 ~ 006

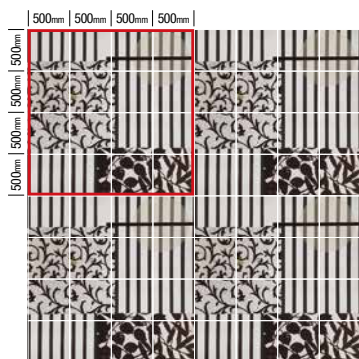
Open price (16 sheets / repeat)



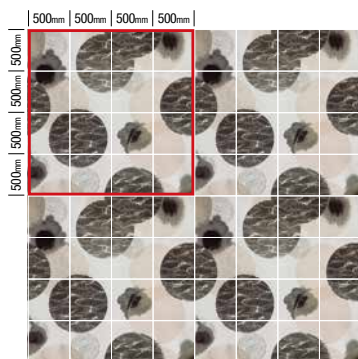
DESIGNERS



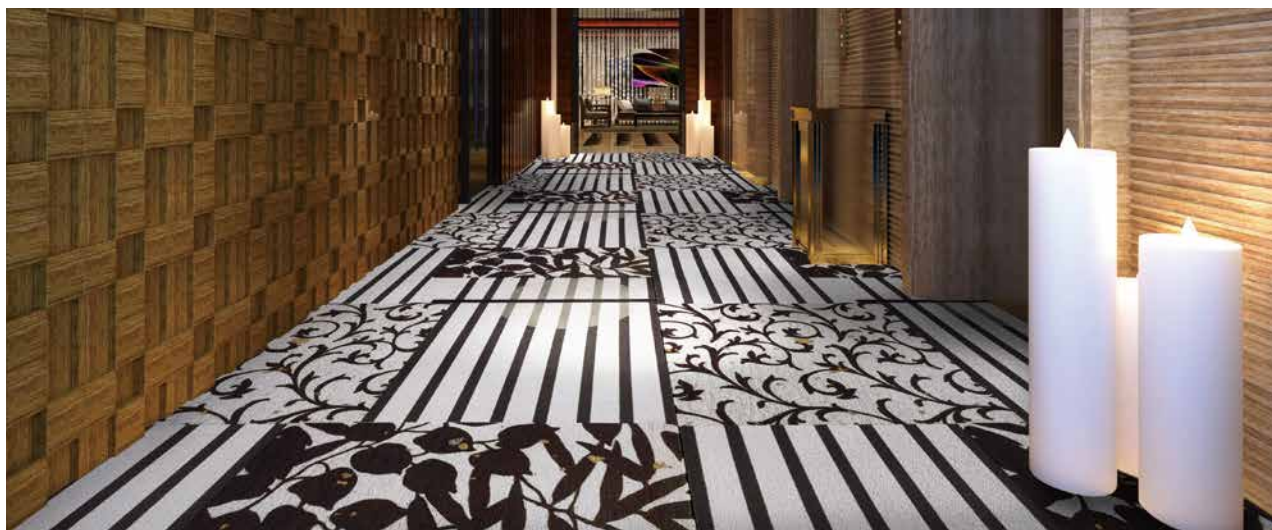
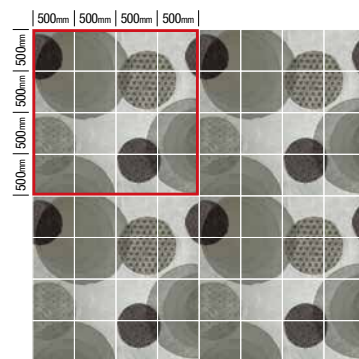
DYW004



DYW005

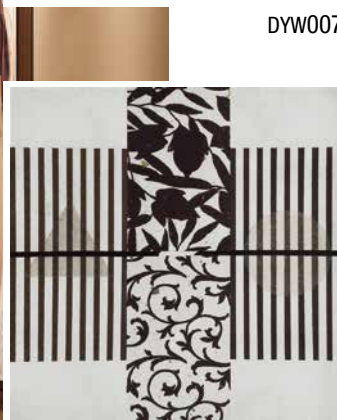
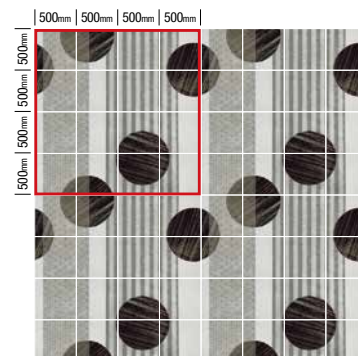


DYW006

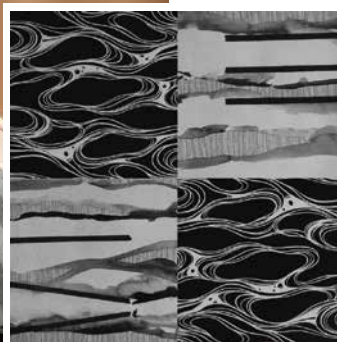
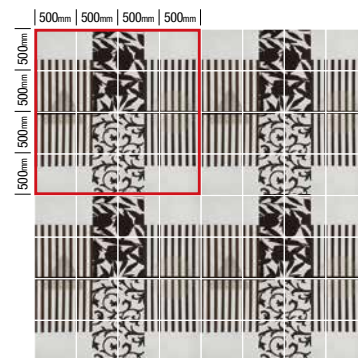




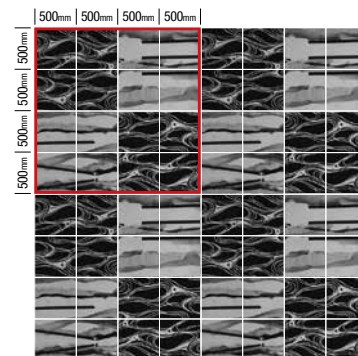
DYW007



DYW08



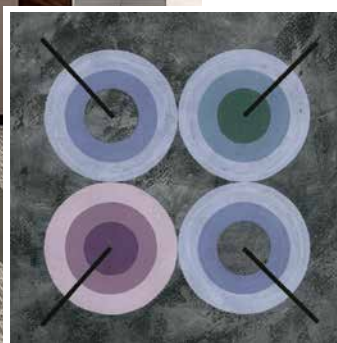
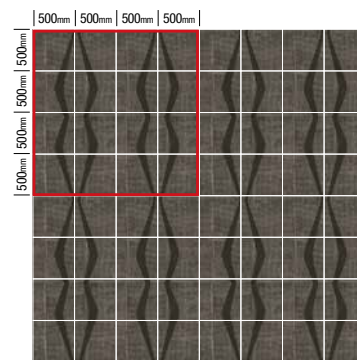
DYW009



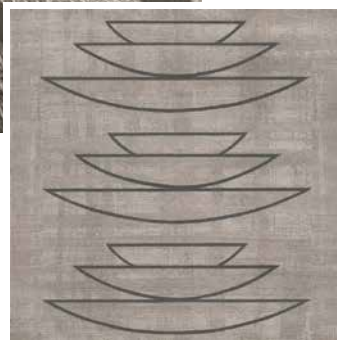
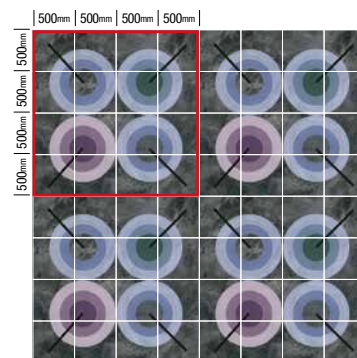




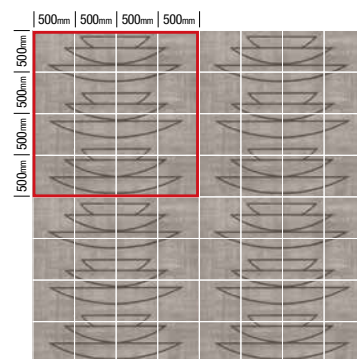
DYK001



DYK002



DYK003



象  
katachi

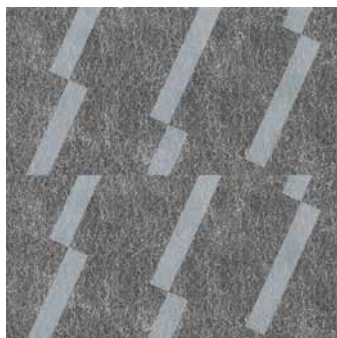
DYK001 ~ 003

Open price (16 sheets / repeat)

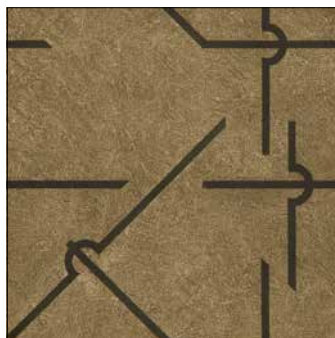
COLOR  
CHANGE

SCALE  
UP

SCALE  
DOWN



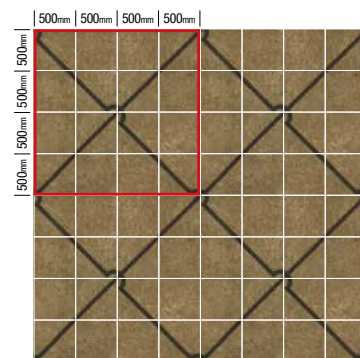
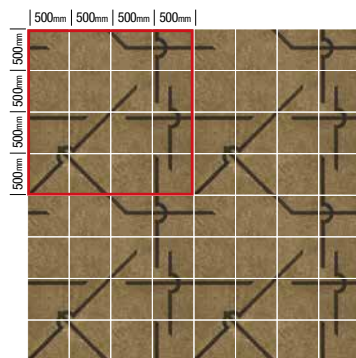
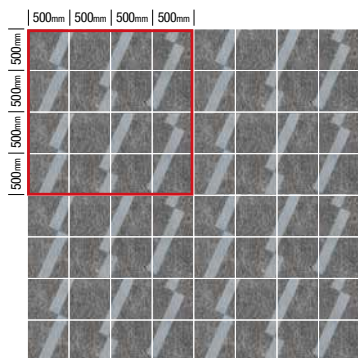
DYK004



DYK005



DYK006



DYK004 ~ 006

Open price (16 sheets / repeat)





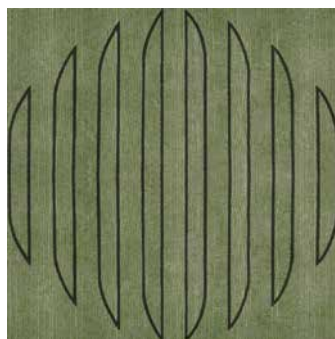


katachi

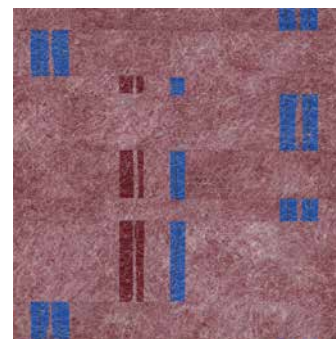
象



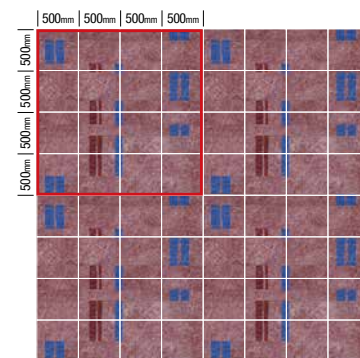
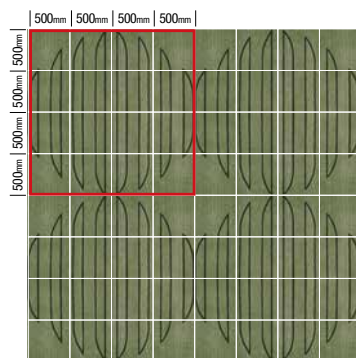
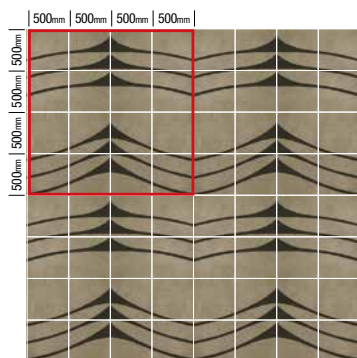
DYK007



DYK008



DYK009



DYK007 ~ 009

Open price (16 sheets / repeat)

COLOR  
CHANGESCALE  
UPSCALE  
DOWN



**Bring your bold imagination to the floor.  
Dynamic design attracts the viewer  
at first sight.**

◇ stile 02

# ***AMUSEMENT***





VA009-1



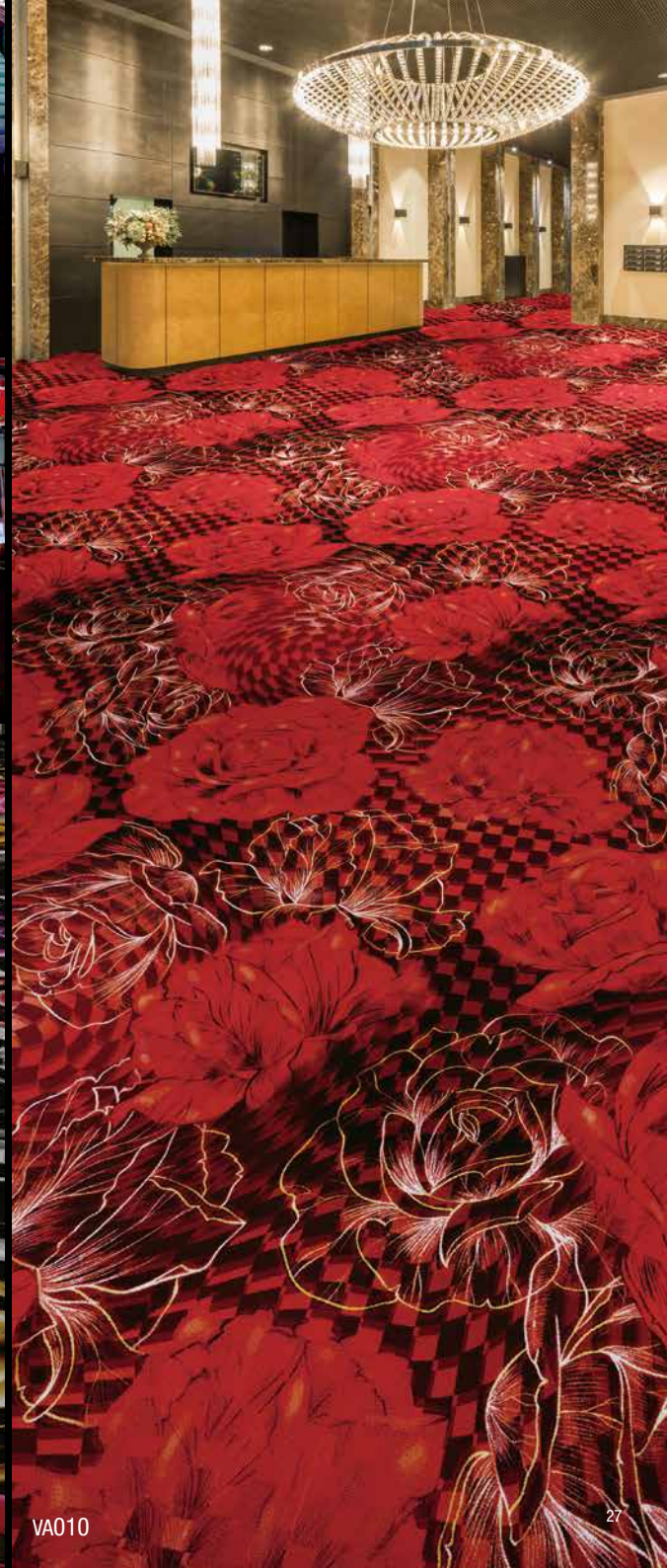
VA007



VA008

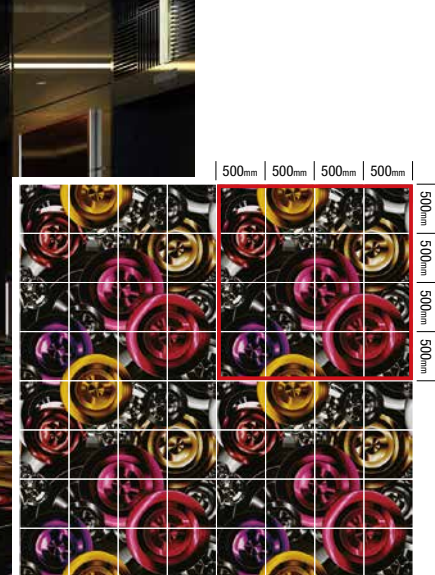


VA001-1



VA010





VA001-1



VA001-2



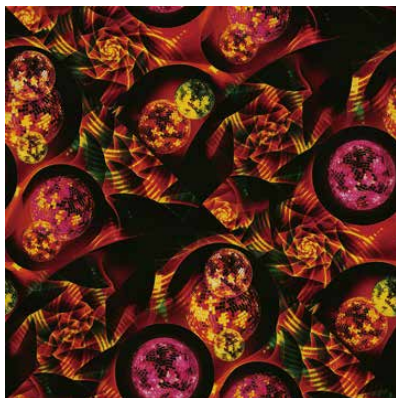
VA001-3

VA001-1~3

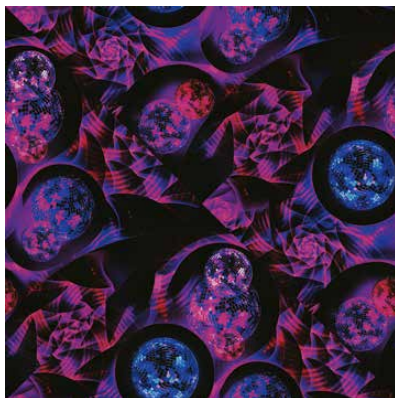
COLOR  
CHANGESCALE  
UPSCALE  
DOWN

Open price (16 sheets / repeat)





VA002-2

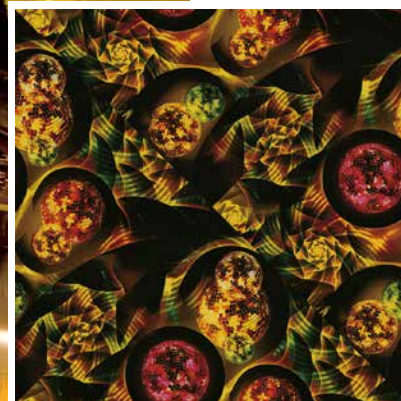
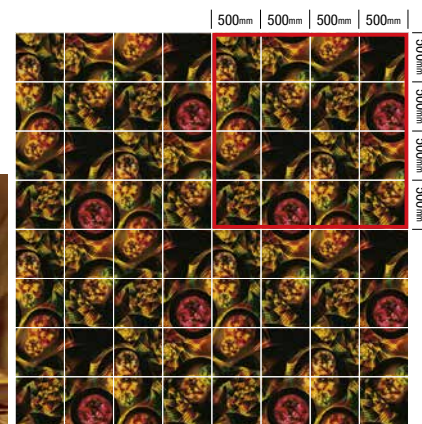


VA002-3

VA002-1~3

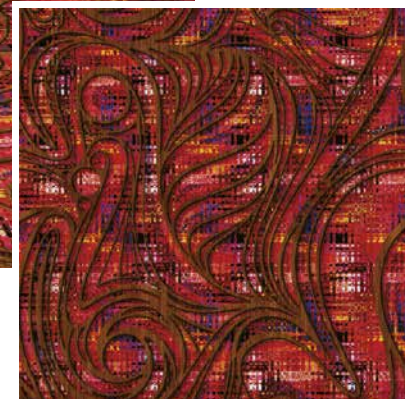
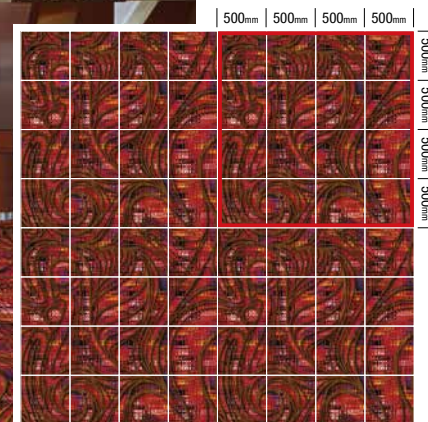
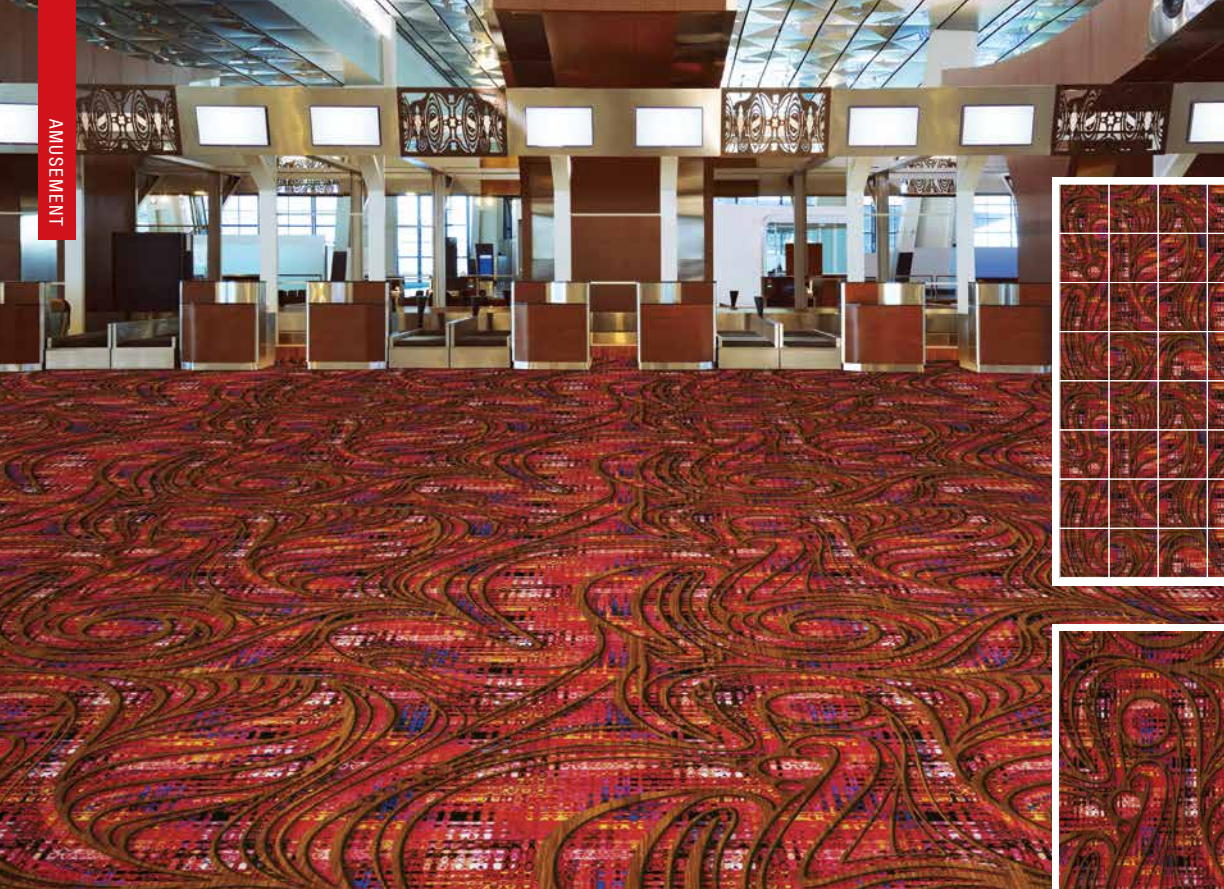
COLOR  
CHANGESCALE  
UPSCALE  
DOWN

Open price (16 sheets / repeat)

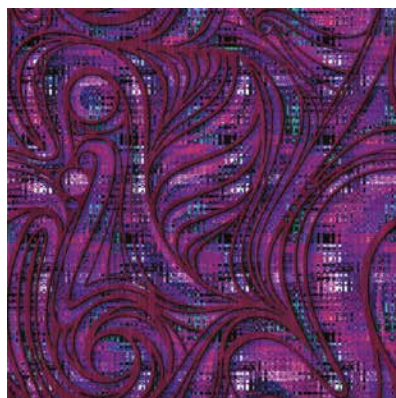


VA002-1

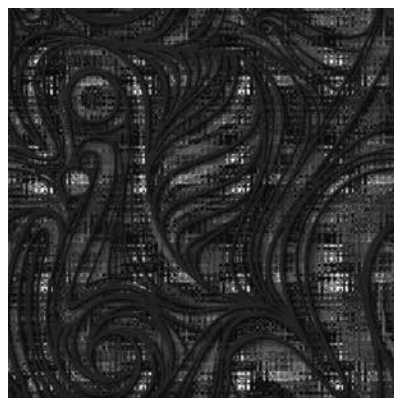




VA003-1



VA003-2



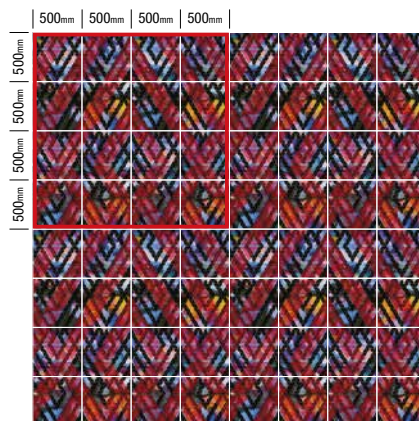
VA003-3

VA003-1~3

COLOR  
CHANGESCALE  
UPSCALE  
DOWN

Open price (16 sheets / repeat)





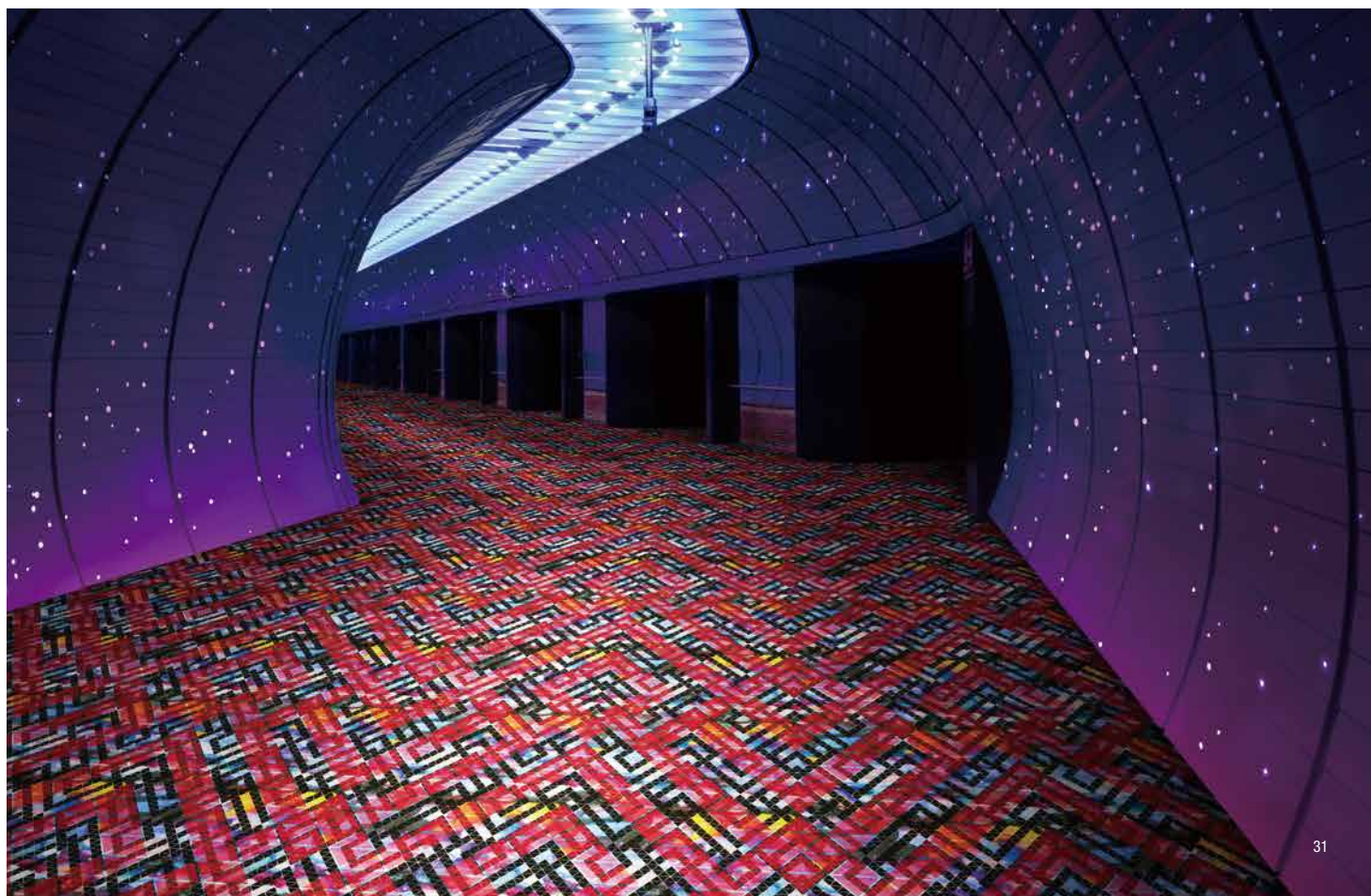
VA004

COLOR  
CHANGE

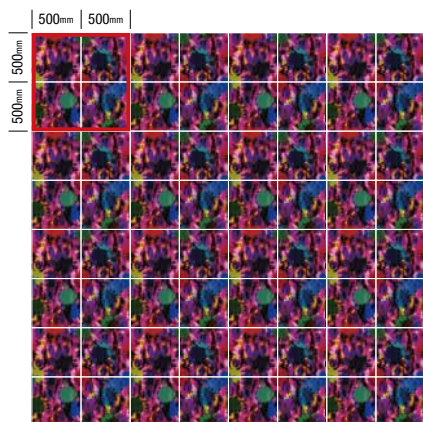
SCALE  
UP

SCALE  
DOWN

Open price (16 sheets / repeat)







VA005

COLOR  
CHANGE

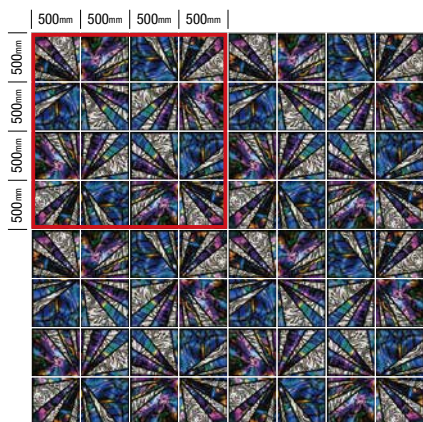
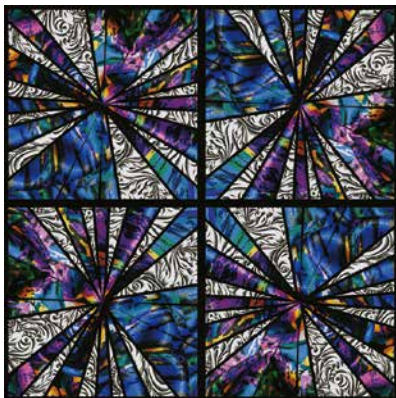
SCALE  
UP

SCALE  
DOWN

Open price (16 sheets / repeat)







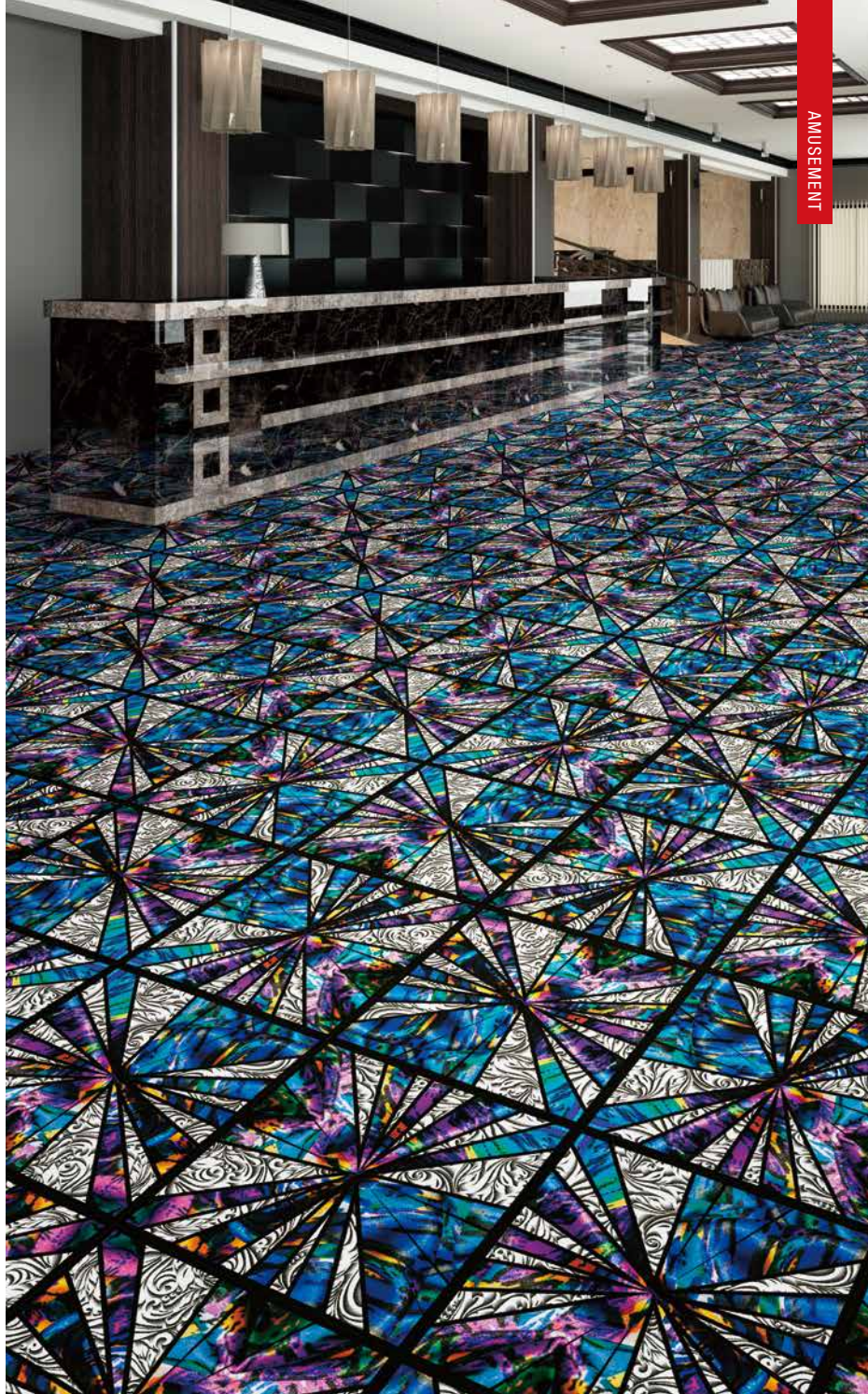
VA006

COLOR  
CHANGE

SCALE  
UP

SCALE  
DOWN

Open price (16 sheets / repeat)

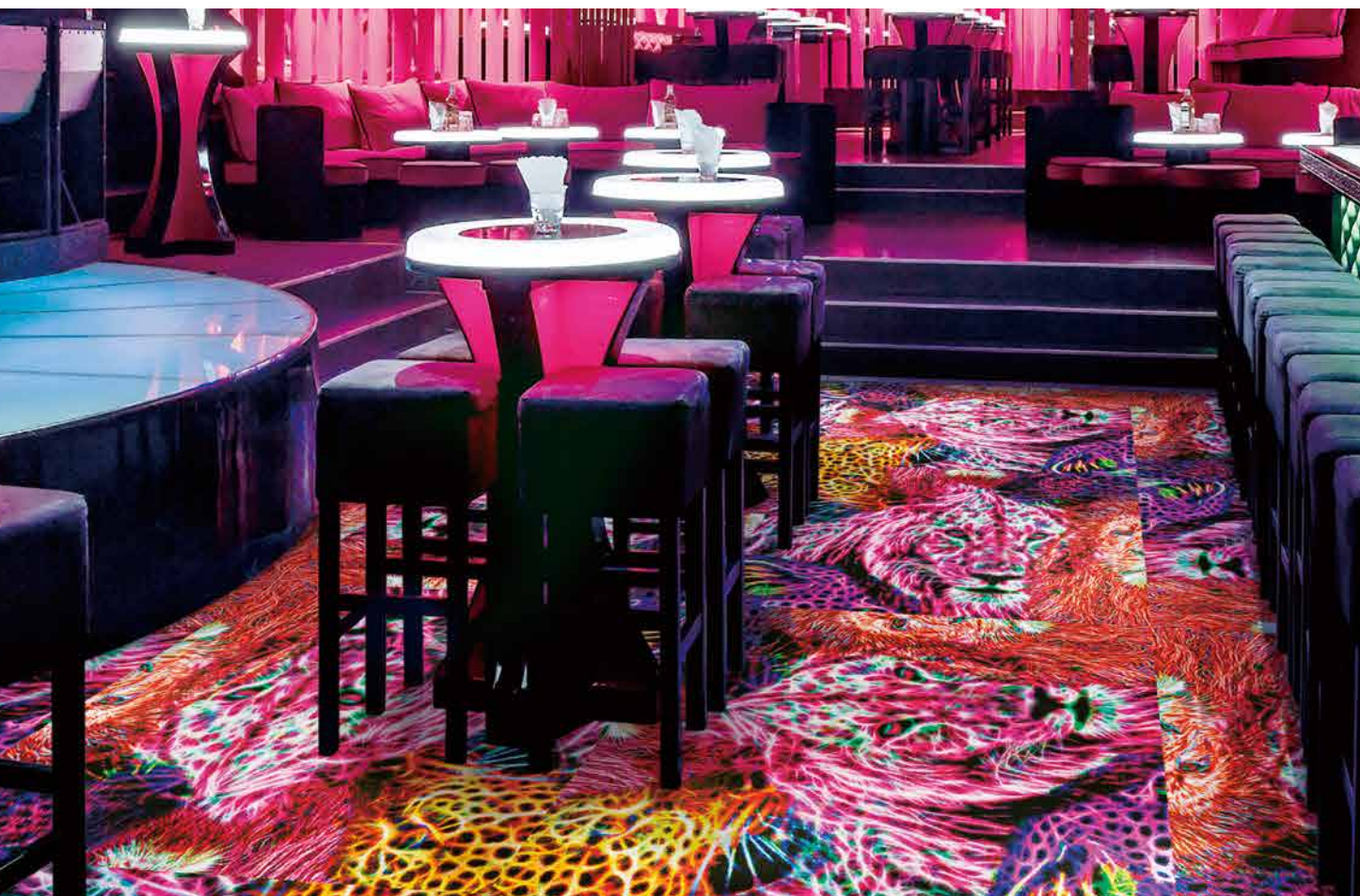
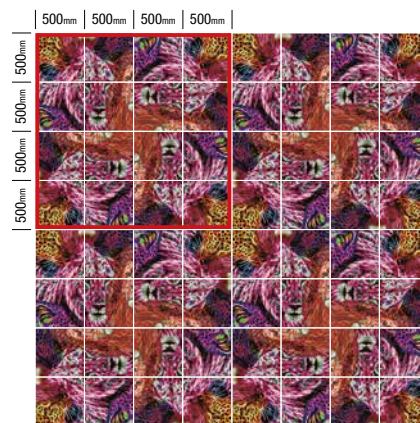




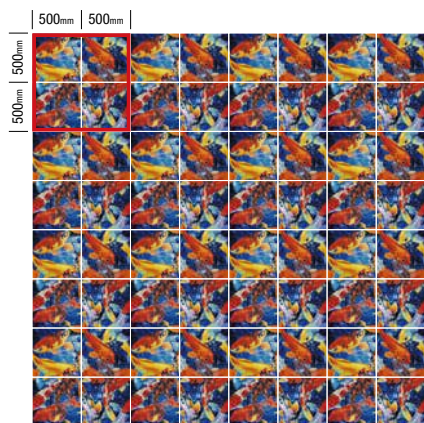
VA007



Open price (16 sheets / repeat)







VA008

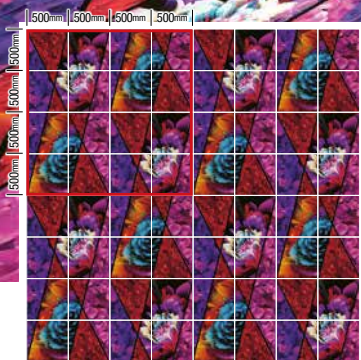
COLOR  
CHANGE

SCALE  
UP

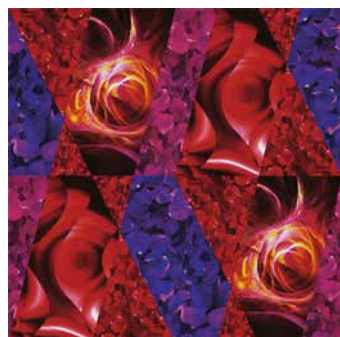
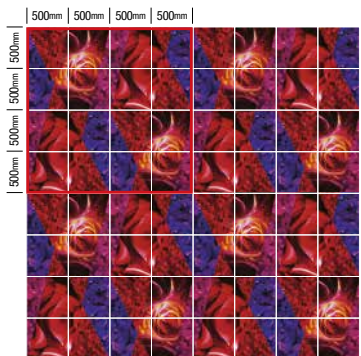
SCALE  
DOWN

Open price (16 sheets / repeat)





VA009-1



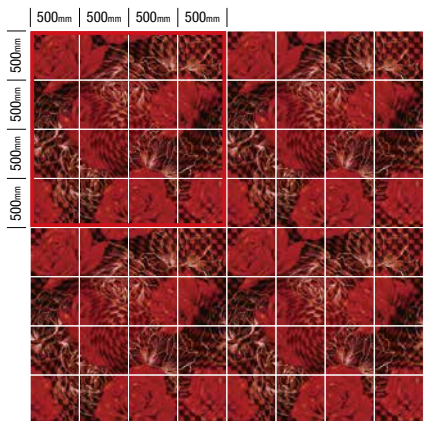
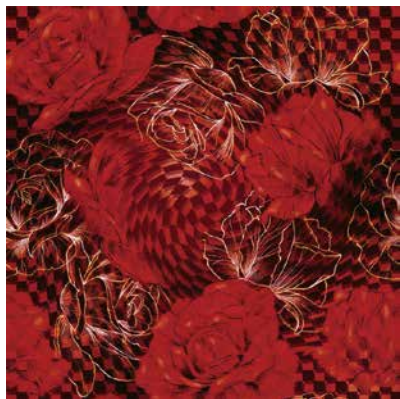
VA009-2

VA009-1 · 2

COLOR  
CHANGESCALE  
UPSCALE  
DOWN

Open price (16 sheets / repeat)





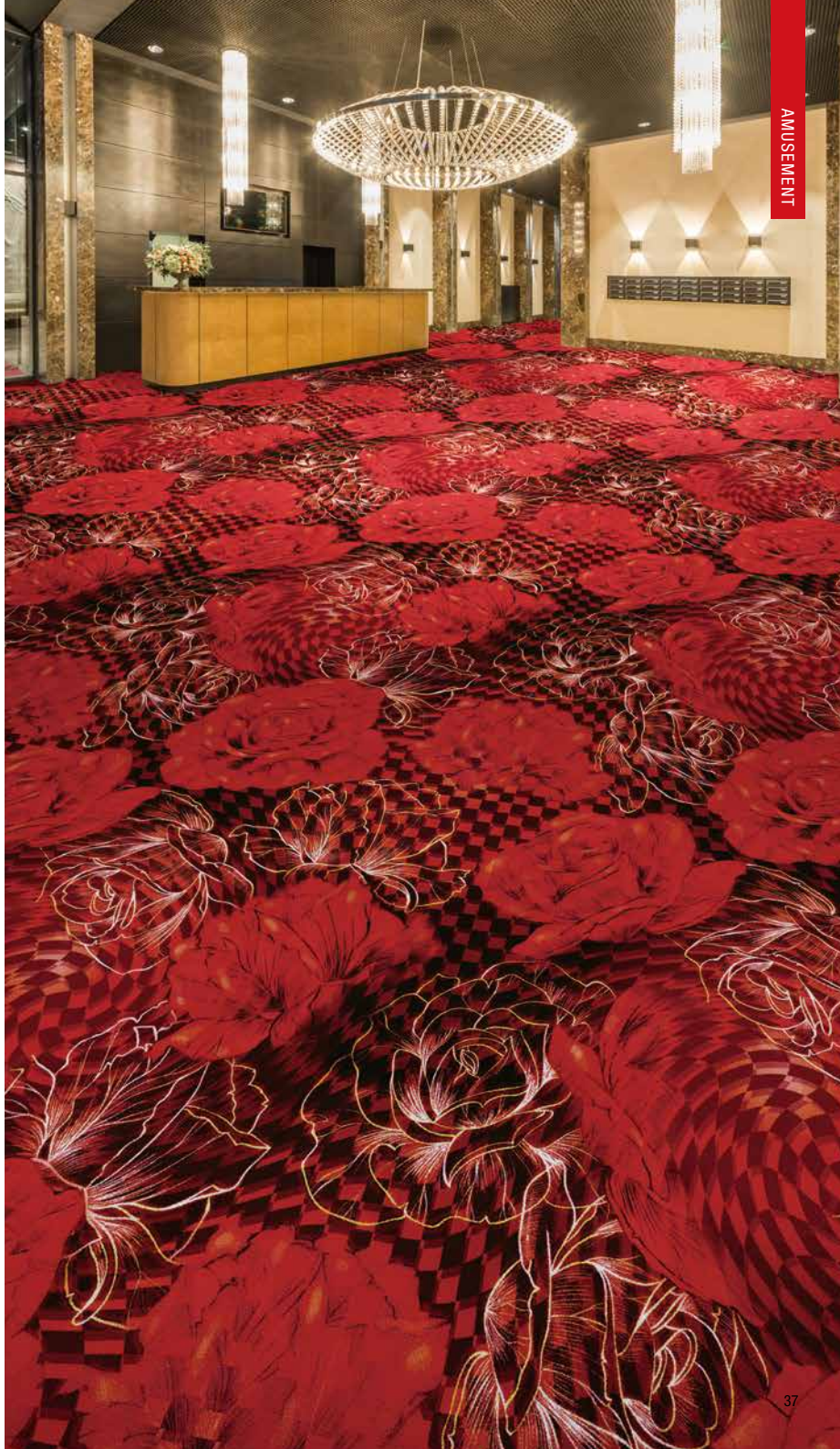
VA010

COLOR  
CHANGE

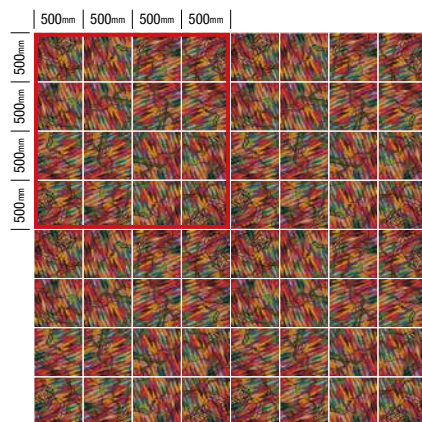
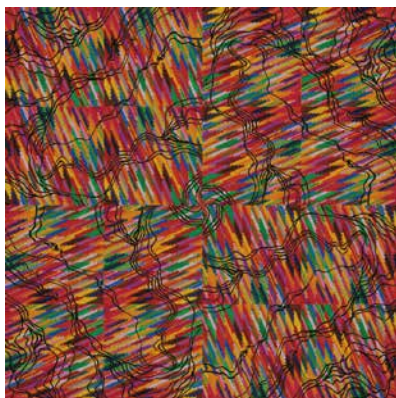
SCALE  
UP

SCALE  
DOWN

Open price (16 sheets / repeat)







VA011

COLOR  
CHANGE

SCALE  
UP

SCALE  
DOWN

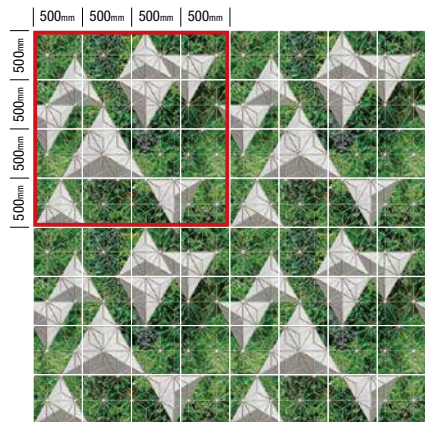
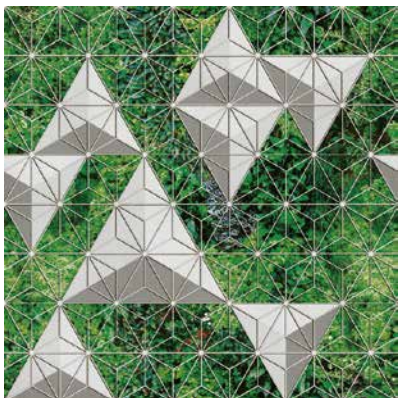
Open price (16 sheets / repeat)



VA012



Open price (16 sheets / repeat)







◇ stile 03

*Elegant*





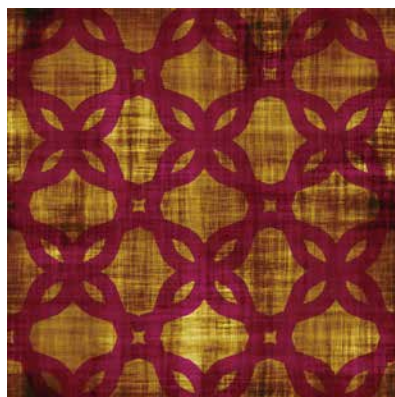
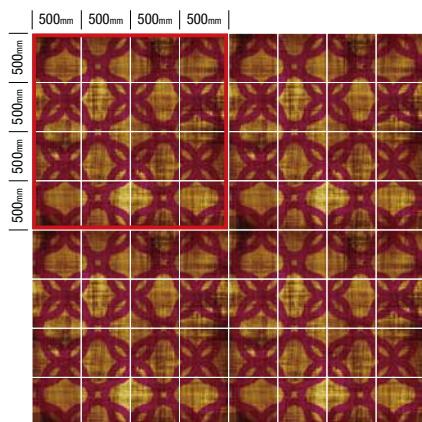
Being particular about the flow and overlap of patterns, “time” and “space” have been directed to be in an elegant and attractive manner.



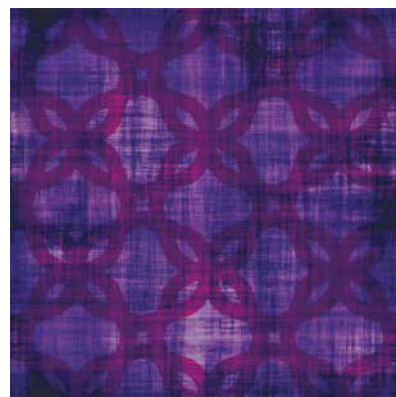


VE001-1 • 2

Open price (16 sheets / repeat)

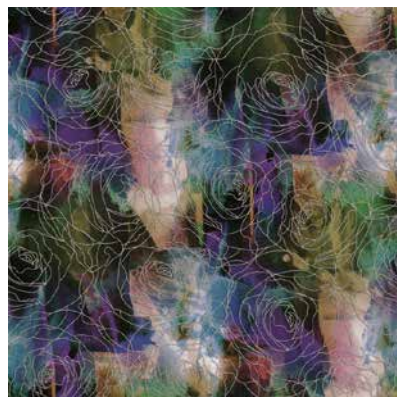
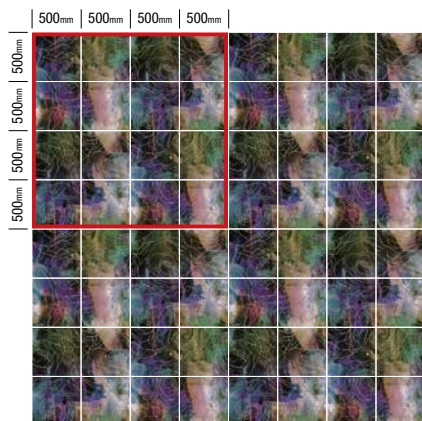
COLOR  
CHANGESCALE  
UPSCALE  
DOWN

VE001-1



VE001-2





VE002-1



VE002-2

VE002-1 • 2

Open price (16 sheets / repeat)

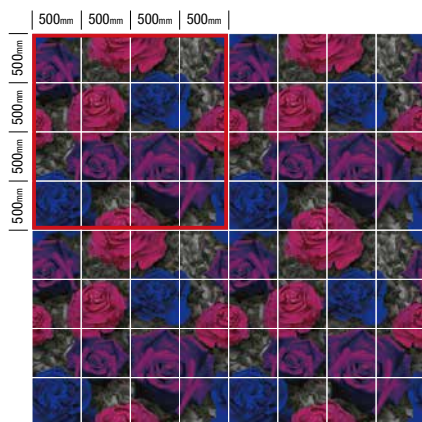






VE003-1 • 2

Open price (16 sheets / repeat)

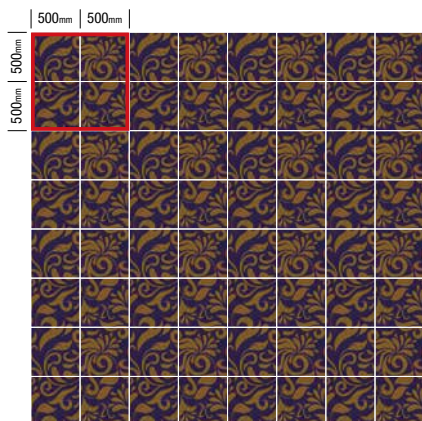
COLOR  
CHANGESCALE  
UPSCALE  
DOWN

VE003-1



VE003-2





VE004-1



VE004-2

VE004-1 • 2

Open price (16 sheets / repeat)



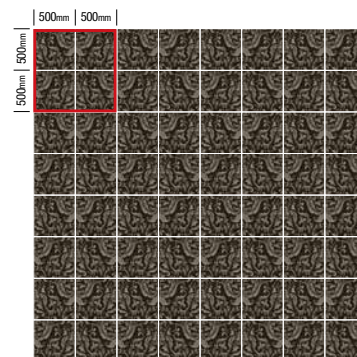


VE005-1 ~ 3

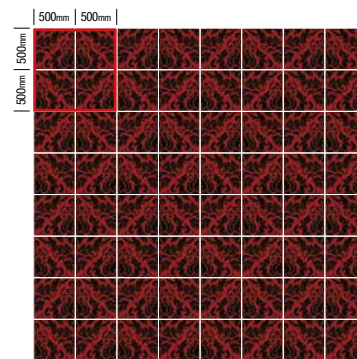
Open price (16 sheets / repeat)

COLOR  
CHANGESCALE  
UPSCALE  
DOWN

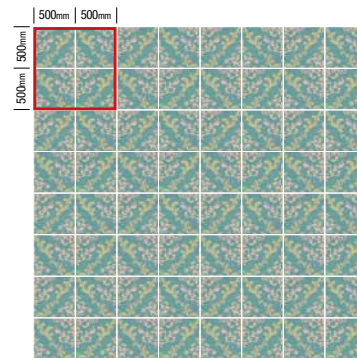
VE005-1



VE005-2



VE005-3

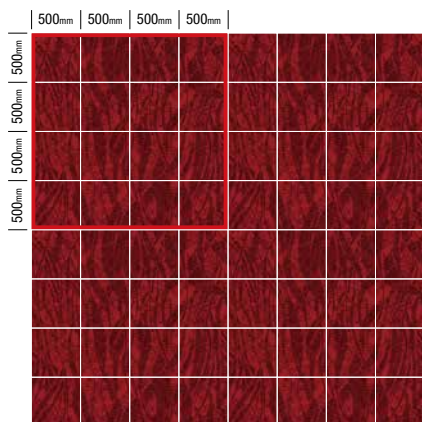






VE006-1 • 2

Open price (16 sheets / repeat)

COLOR  
CHANGESCALE  
UPSCALE  
DOWN

VE006-1



VE006-2





**The vividness and  
fun a color has is expressed.  
It creates a colorful space  
like no other.**

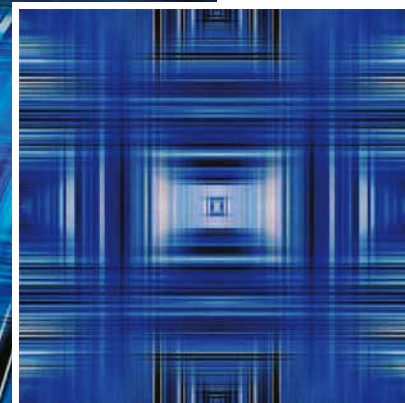




◇ stile 04

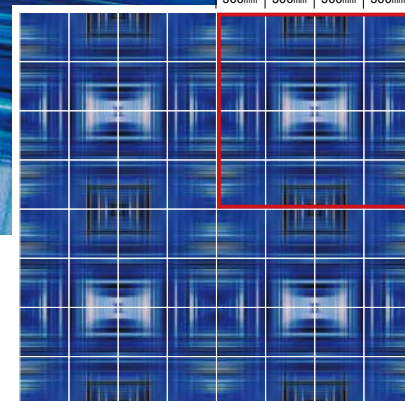
COLOR



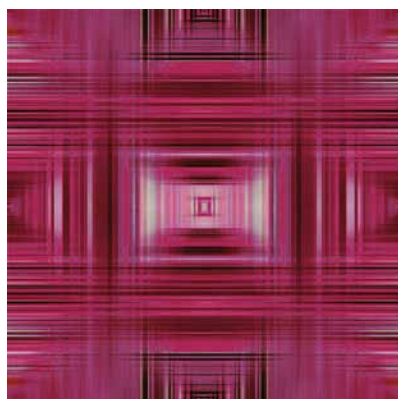


VC001-1

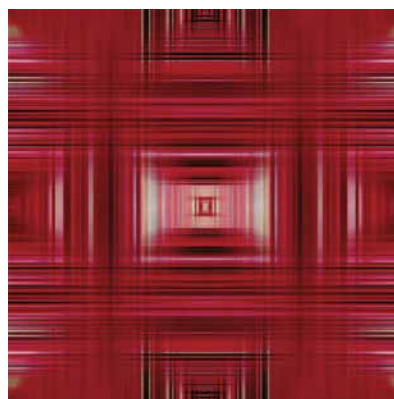
500mm | 500mm | 500mm | 500mm |



500mm | 500mm | 500mm | 500mm |



VC001-2



VC001-3

VC001-1~3

COLOR  
CHANGE

SCALE  
UP

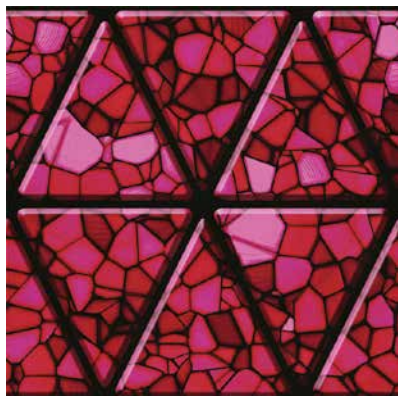
SCALE  
DOWN

Open price (16 sheets / repeat)





VC002-2

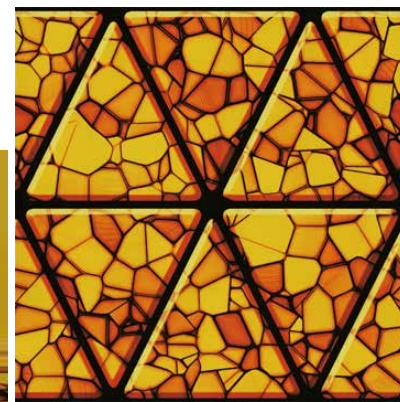
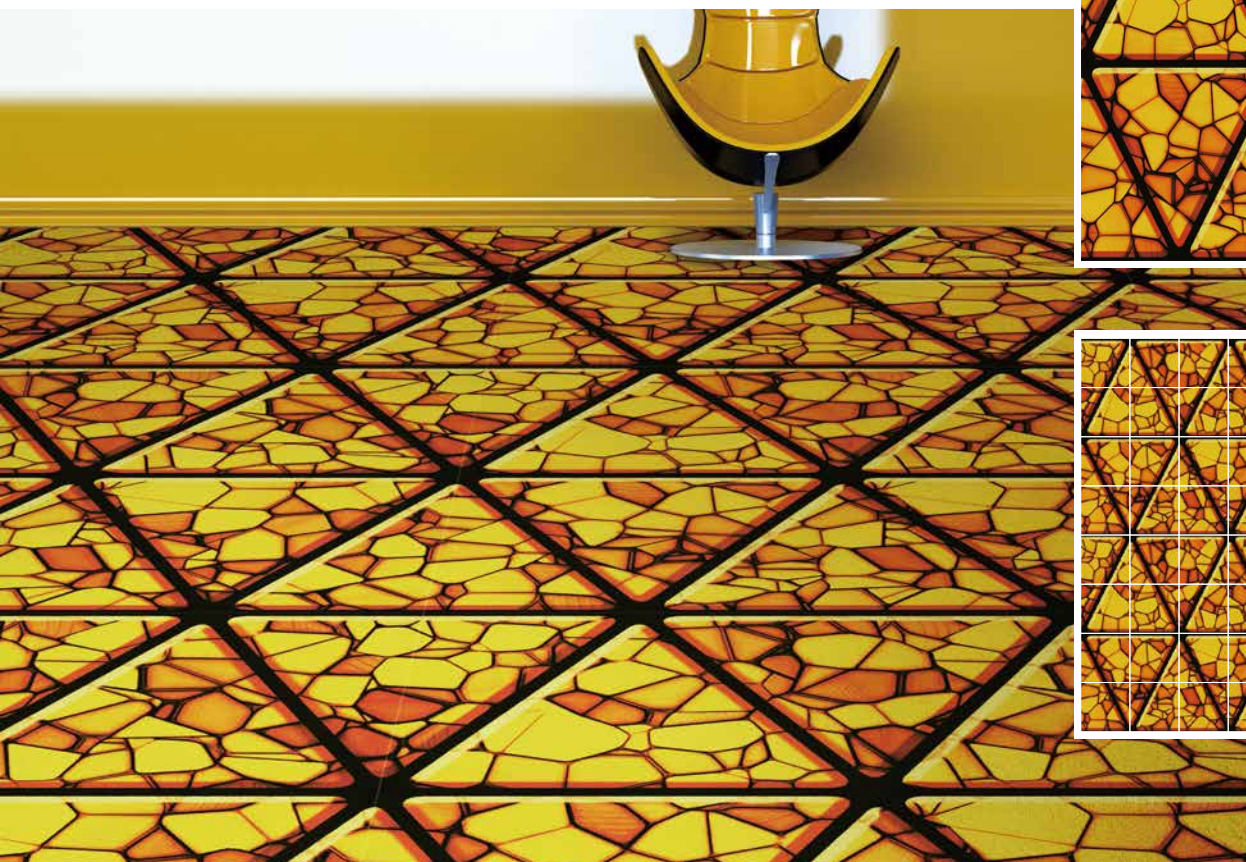


VC002-3

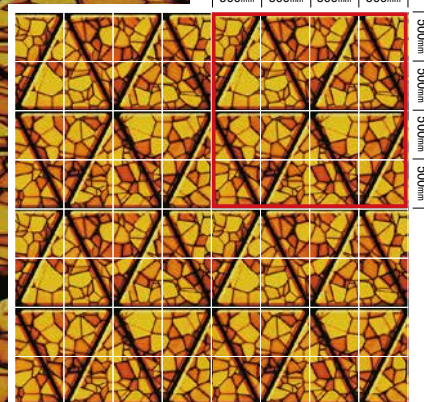
VC002-1~3



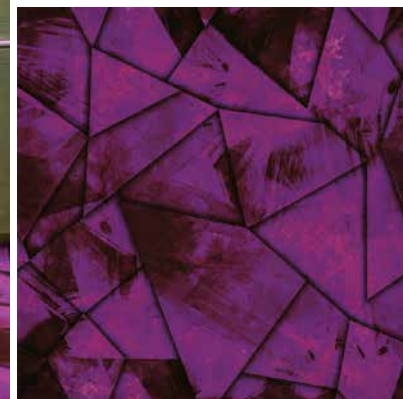
Open price (16 sheets / repeat)



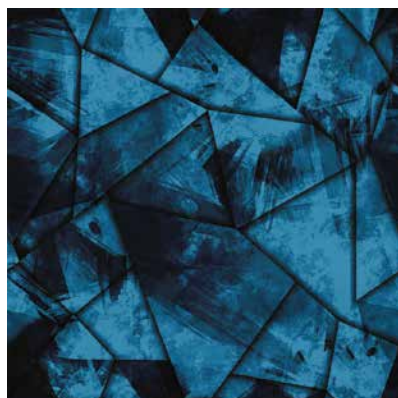
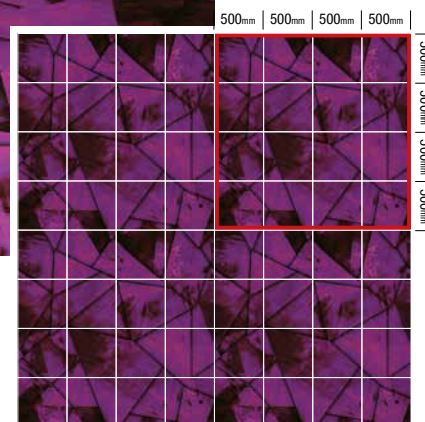
VC002-1







VC003-1



VC003-2



VC003-3

VC003-1~3



Open price (16 sheets / repeat)





VC004-2



VC004-3

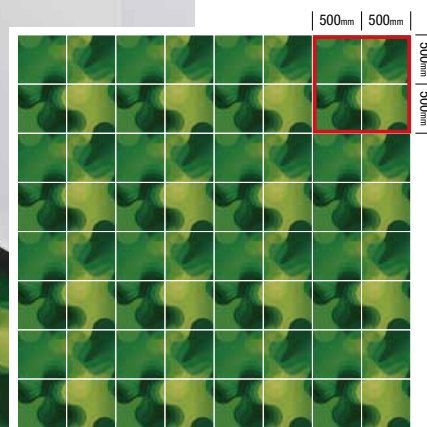
VC004-1~3



Open price (16 sheets / repeat)



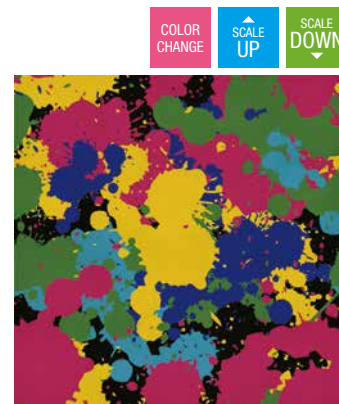
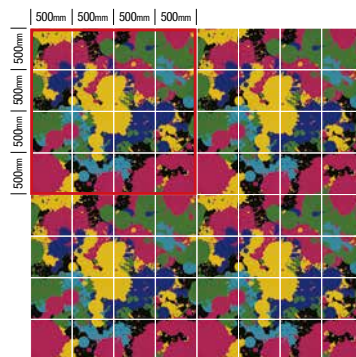
VC004-1



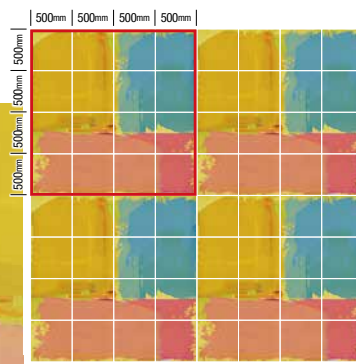


VC005-1 • 2

Open price (16 sheets / repeat)

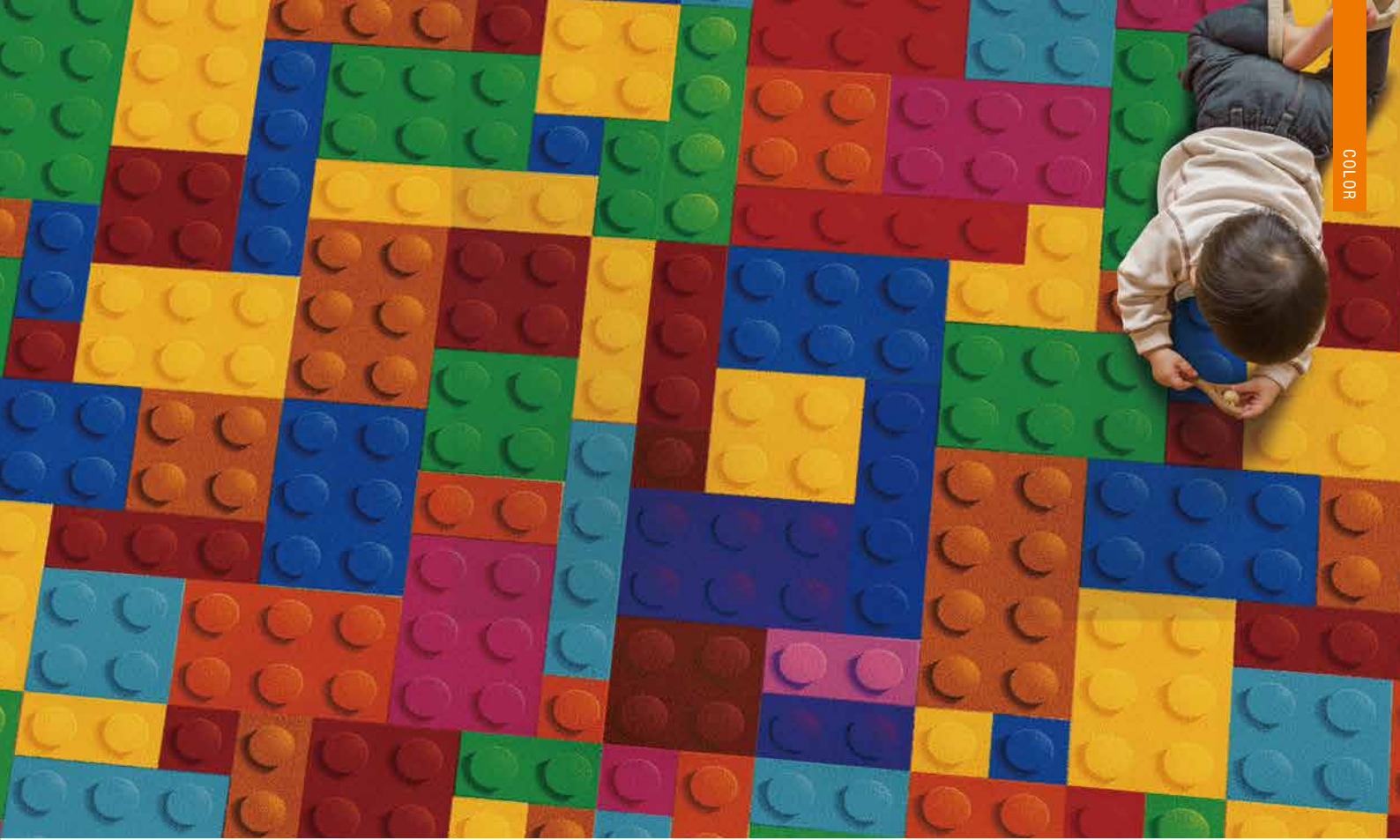


VC005-2

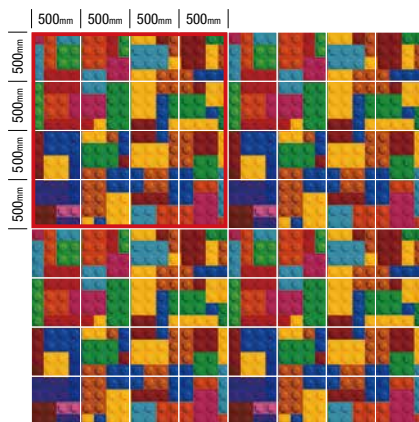
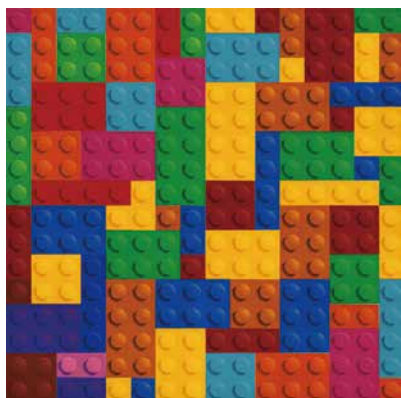


VC005-1





COLOR



vc006

COLOR  
CHANGE

SCALE  
UP

SCALE  
DOWN

Open price (16 sheets / repeat)

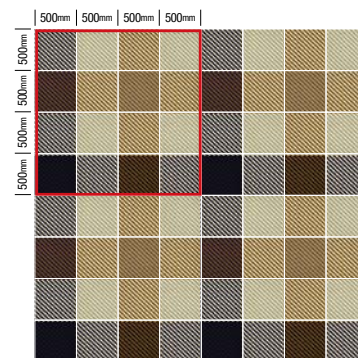


VC007-1 ~ 3

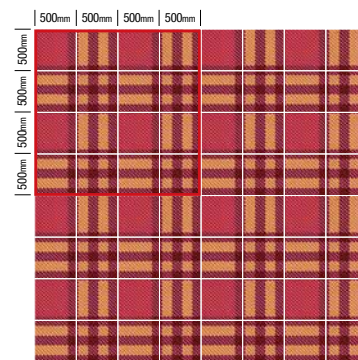
Open price (16 sheets / repeat)

COLOR  
CHANGESCALE  
UPSCALE  
DOWN

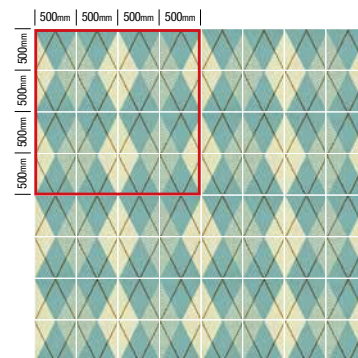
VC007-1



VC007-2



VC007-3



VC008-1 ~ 3

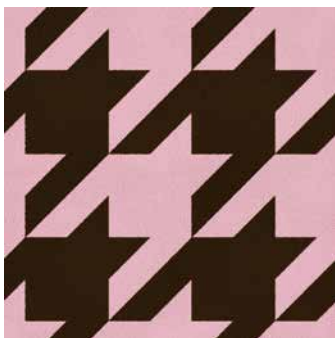
Open price (16 sheets / repeat)

COLOR  
CHANGE

SCALE  
UP

SCALE  
DOWN

COLOR



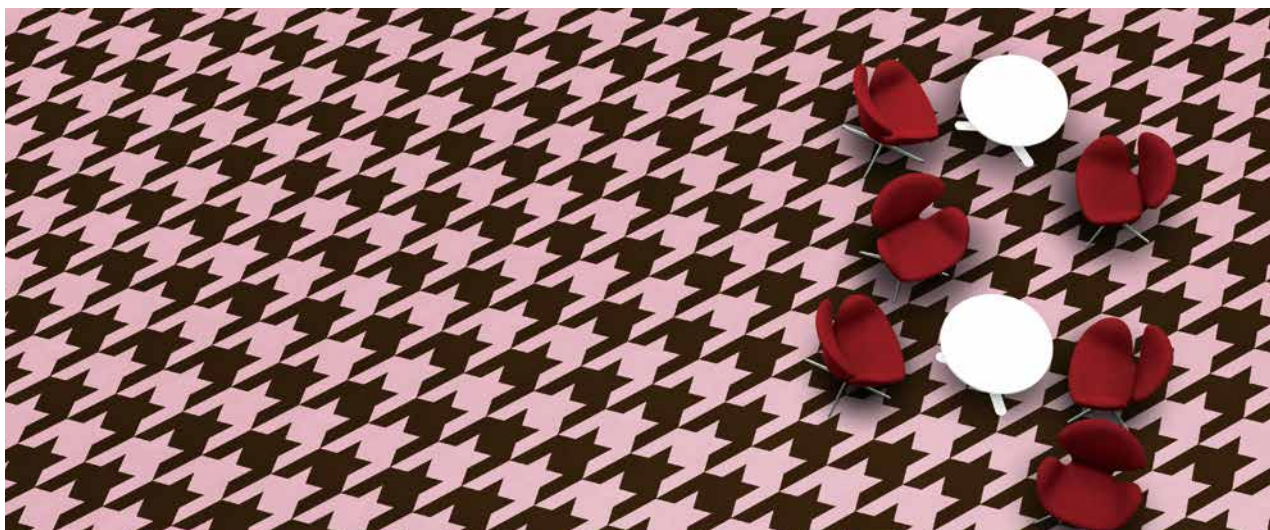
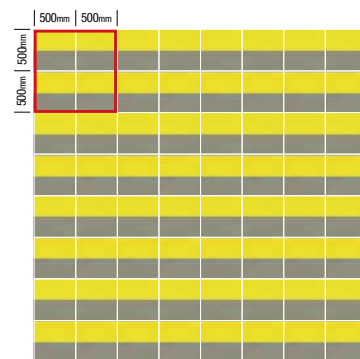
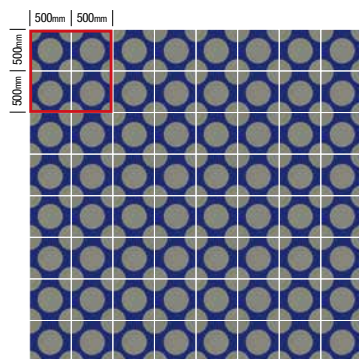
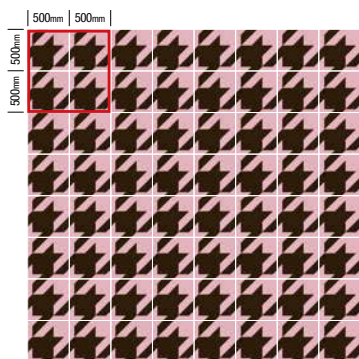
VC008-1



VC008-2



VC008-3







◇ stile 05

Nature





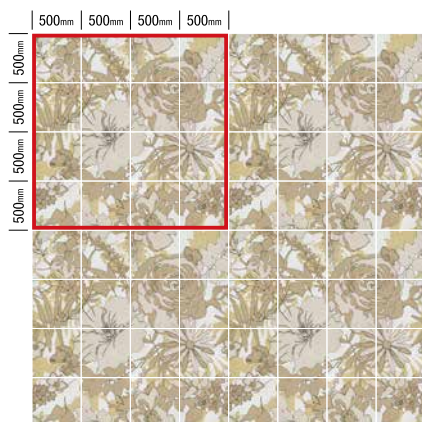
**The natural materials and  
the carpet texture creates the warmth  
in the space and directs the comfortableness.**





VN001-1 • 2

Open price (16 sheets / repeat)

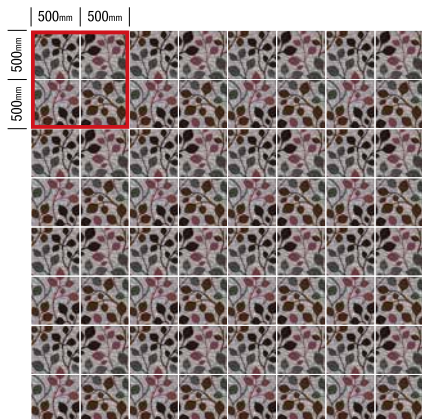
COLOR  
CHANGESCALE  
UPSCALE  
DOWN

VN001-1



VN001-2





VN002-1



VN002-2

VN002-1 • 2

Open price (16 sheets / repeat)

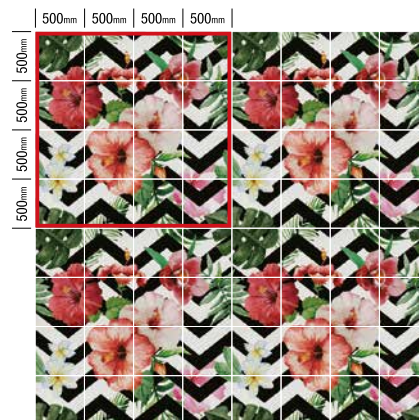


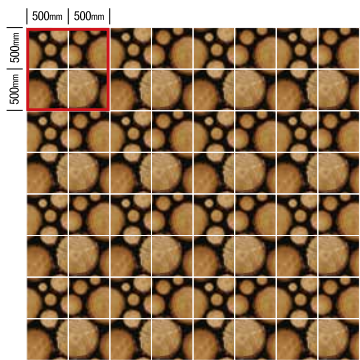


VN003

COLOR  
CHANGESCALE  
UPSCALE  
DOWN

Open price (16 sheets / repeat)





VN004-1

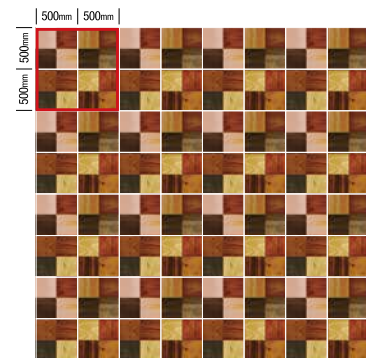


Open price (16 sheets / repeat)

VN004-2



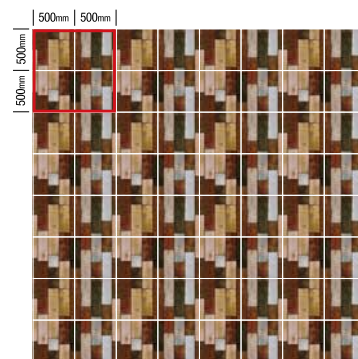
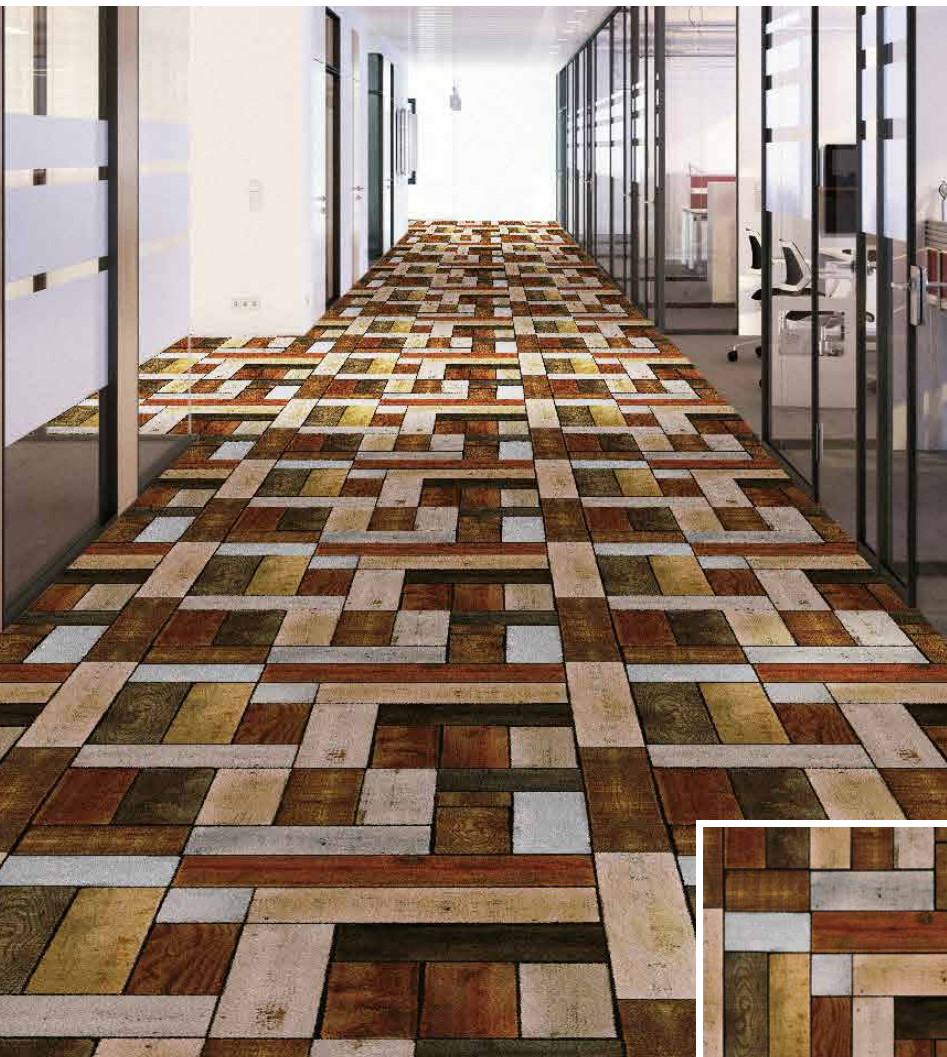
Open price (16 sheets / repeat)





VN005-1 • 2

Open price (16 sheets / repeat)

COLOR  
CHANGESCALE  
UPSCALE  
DOWN

VN005-2

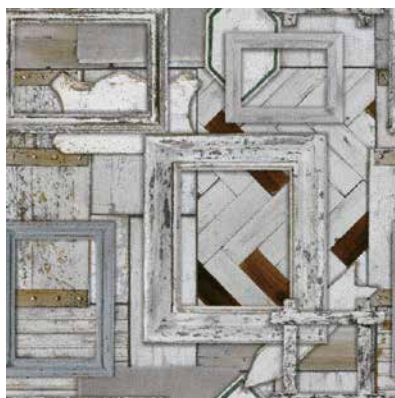
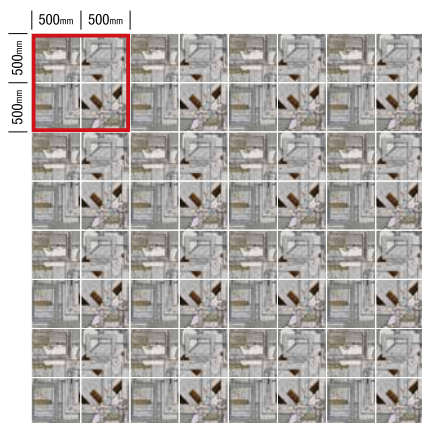


VN005-1



VN006-1 • 2

Open price (16 sheets / repeat)

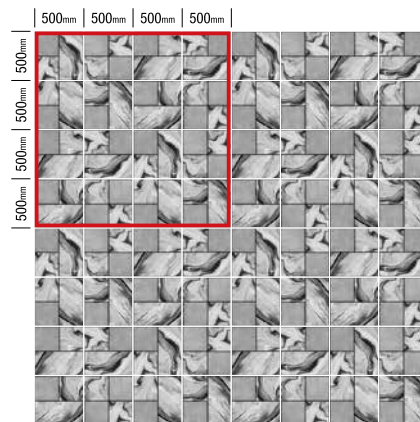
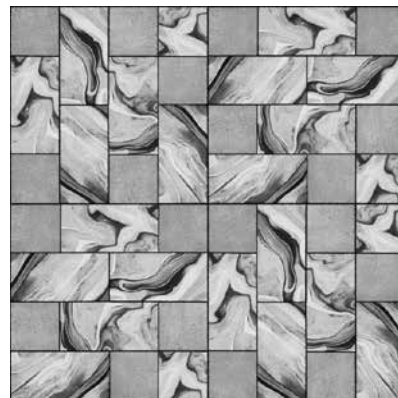
COLOR  
CHANGESCALE  
UPSCALE  
DOWN

VN006-1



VN006-2



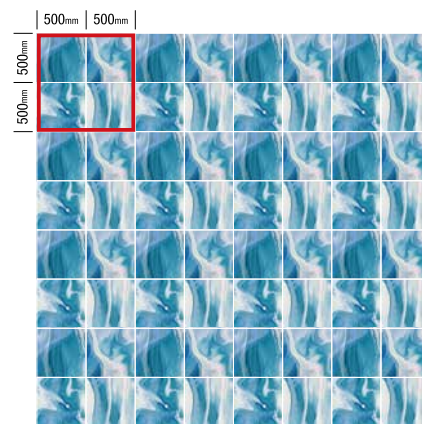


VN007



Open price (16 sheets / repeat)





VN008

COLOR  
CHANGESCALE  
UPSCALE  
DOWN

Open price (16 sheets / repeat)





◇ stile 06

# Traditional



The image shows a room with a dark carpet featuring a repeating geometric pattern of gold-colored lines. Two rectangular tables with red tablecloths are visible. In the background, there is a wooden railing and a black, boxy object, possibly a heater or a piece of furniture. A tall, narrow lantern with a warm, orange glow is positioned between the tables.

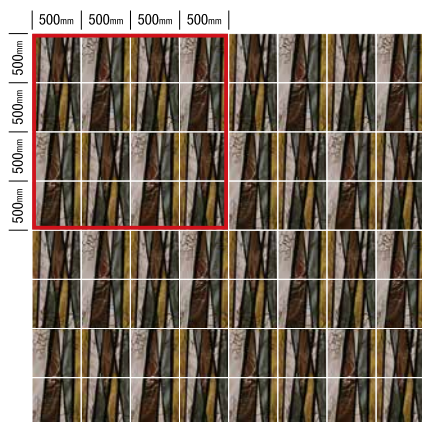
**Traditional pattern of  
the respective countries are  
turned into an homage.  
Enjoy the world created by stile.**





VT001-1 • 2

Open price (16 sheets / repeat)

COLOR  
CHANGESCALE  
UPSCALE  
DOWN

VT001-1



VT001-2



VT002-1 • 2

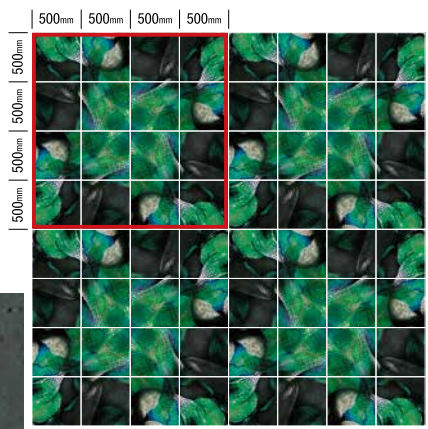
Open price (16 sheets / repeat)

COLOR  
CHANGE

SCALE  
UP

SCALE  
DOWN

TRADITIONAL



VT002-1



VT002-2



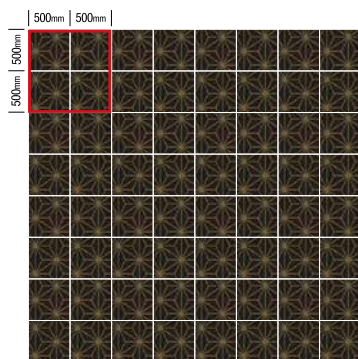


VT003-1 ~ 3

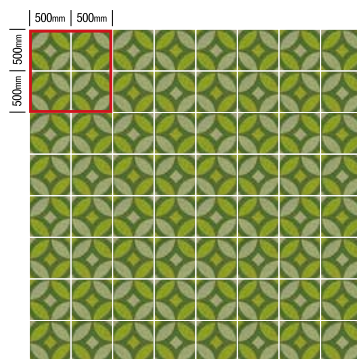
Open price (16 sheets / repeat)

COLOR  
CHANGESCALE  
UPSCALE  
DOWN

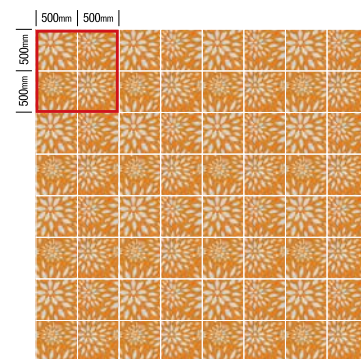
VT003-1



VT003-2



VT003-3





VT004-1 ~ 3

Open price (16 sheets / repeat)

COLOR  
CHANGE

SCALE  
UP

SCALE  
DOWN

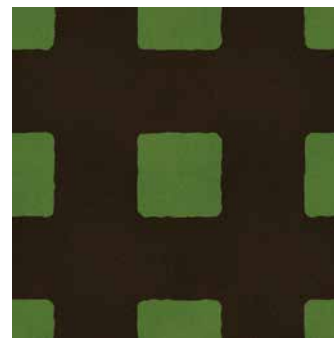
TRADITIONAL



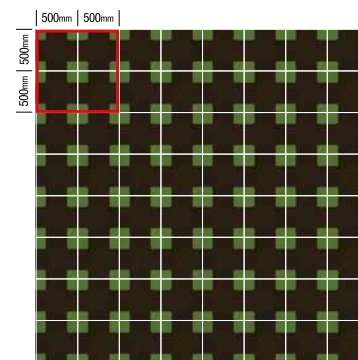
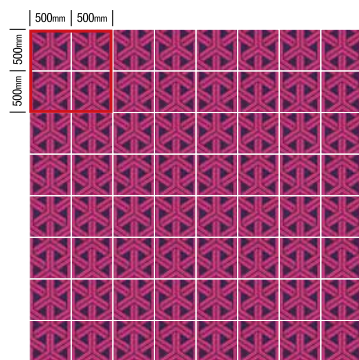
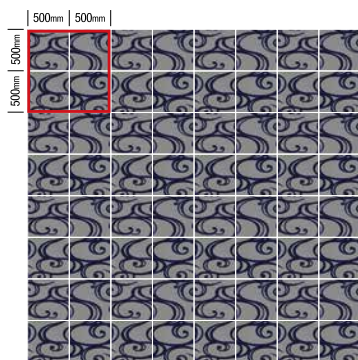
VT004-1



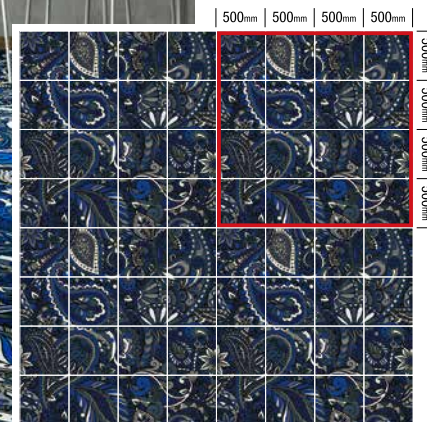
VT004-2



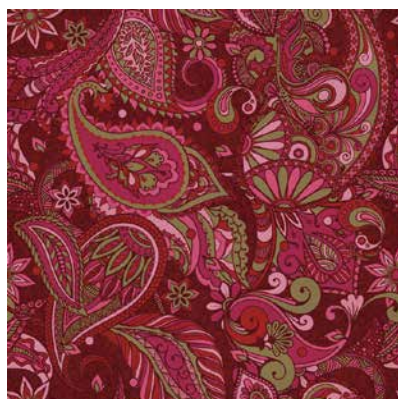
VT004-3







VT005-1



VT005-2



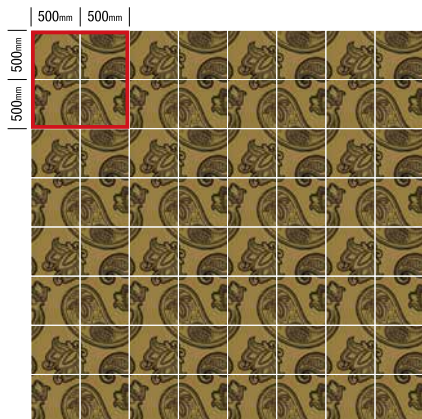
VT005-3

VT005-1~3



Open price (16 sheets / repeat)





VT006-1



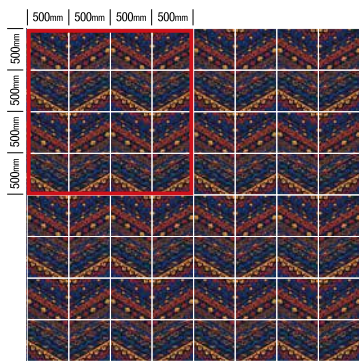
VT006-2

VT006-1 • 2

Open price (16 sheets / repeat)







VT007-1

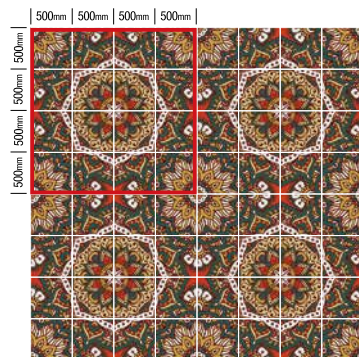
COLOR  
CHANGESCALE  
UPSCALE  
DOWN

Open price (16 sheets / repeat)

VT007-2

COLOR  
CHANGESCALE  
UPSCALE  
DOWN

Open price (16 sheets / repeat)







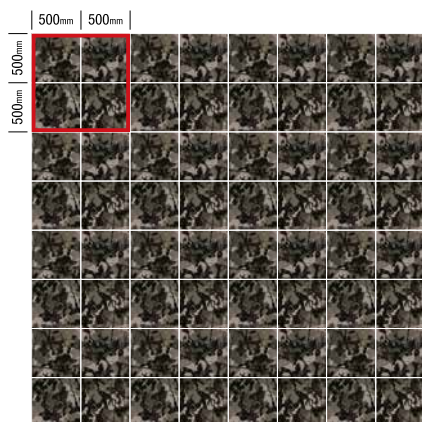
VT008-1•2

Open price (16 sheets / repeat)

COLOR  
CHANGE

SCALE  
UP

SCALE  
DOWN



VN008-1



VN008-2



# CUSTOM ORDER SYSTEM

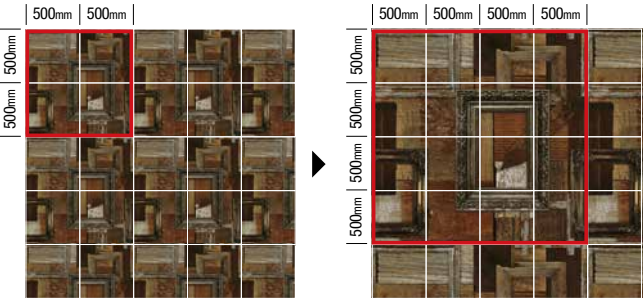


## [ UP & DOWN Scaling ]

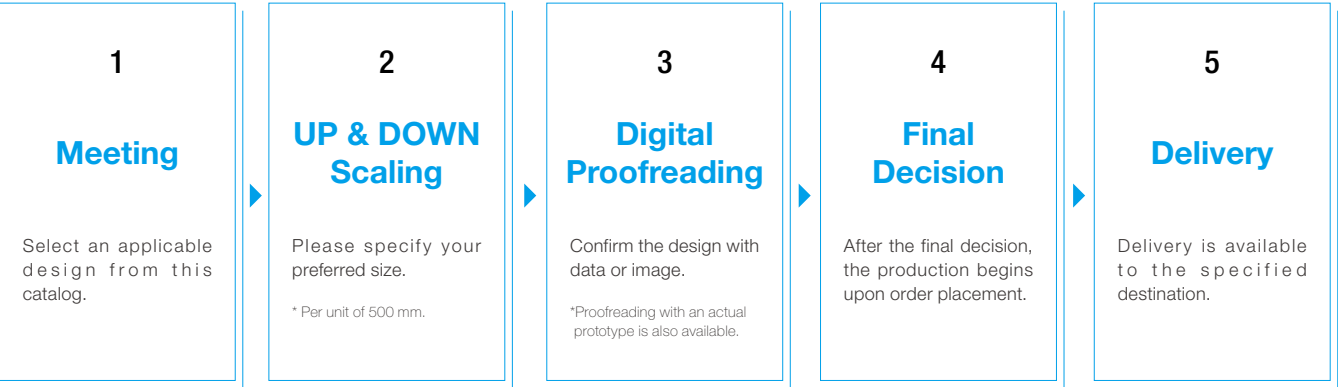
Modifying the carpet design scale is available along with the scene. Especially, upscaling makes the pattern repetition appear less noticeable and directs a bold floor. Enjoy the various sense of scale.

\*Service is available subject to design.

Minimum Size: : 1000mm × 1000mm



## Order Flow





COLOR  
CHANGE

## 【 Color Change 】

Changing the carpet design color is available along with the scene. The space is directed by being connected with colors along with the concept and color image. Enjoy the variety of color lineup.

\*Service is available subject to design.

\* Please select from our standard/optional colors. Specific colors are available, too.



COLOR  
CHANGE

## Order Flow

1

### Meeting

Select an applicable design from this catalog.

2

### Color Selection

Please select your preferred color from the total 46 of our standard/optional color offerings. (see p.80)

\*Color change to your preferred specific color is also available.

3

### Digital Proofreading

Confirm the design with data or image.

\*Proofreading with an actual prototype is also available.

4

### Final Decision

After the final decision, the production begins upon order placement.

5

### Delivery

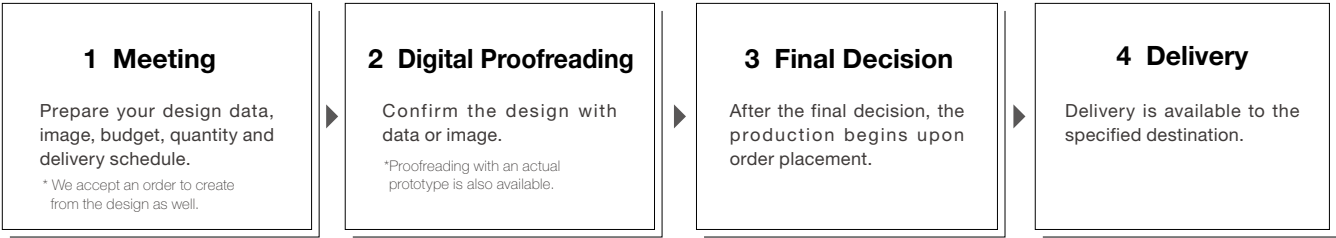
Delivery is available to the specified destination.



# FULL ORDER SYSTEM

With your preferred design, creating an original carpet tile with the digital textile printing is available. We accept an order to create from the design as well.

## Order Flow





## <Product Specification>

**[ Composition ]** Texture : Nylon 100 %  
Base : Glass fibre + PVC resin  
Pile density : 1 / 10 G × 13ST

**[ Specification ]** Pile Length : 6 mm cut pile  
Overall Thickness : 9 mm  
Size : 500mm × 500mm

**[ Packing ]** 16 sheet / case (4㎡) \*maximum

### **[ Construction Method ]**

#### Installation by adhesion

(Bonding carpet with poured hot asphalt is set as a standard)



Figure of bonding carpet with poured hot asphalt

### **[ Performance ]**

**Flameproof :** Tablet Test No. E1160070

Proof of the carpet having passed the tablet test by Japan Fire Retardant Association.

**Antielectricity :** Human Charge Voltage less than 1kv  
(JIS L 1021-16 23°C 25%RH synthetic rubber sole)

Indicates the carpet has the antistatic processing in the pile itself, or made with a material that has antistatic performance in its fibre.

#### Soil Resistant

**Finishing :** This indicates the product has a feature not getting dirty easily dirty, and the dirt comes off easily upon maintenance.

Regular maintenance is the most effective way of keeping its fine sight.  
Caution for operation and maintenance.



## <Product Warning>

### **[ Caution upon Selection ]**

■ The antifouling mark is a standard showing the antifouling property of a product. The performance does not promise the product being dirt-free, hence a regular maintenance is most effective to retain the product beauty and quality. ■ The antistatic mark is a standard showing the antistatic state of a product. ■ Due to the walking environment or the environmental condition such as direct sunlight, discoloring or fading may occur. ■ Due to the designability priority, there are some designs for which the dirt may stand out. Avoid outdoor shoes, and using it in the indoor shoes area is recommended. ■ Cut pile products may appear color-spotted during the use because the pile direction becomes partial uneven, however this phenomena is a nature of the cut pile but not of a quality defect. ■ The method and the location of use is restricted by the Fire Defense Law. Confirm the laws and regulations prior to use. ■ Please be aware that the actual sample or the picture sample may be slightly different from the graphic. ■ Listed pictures contain composites. ■ Upon order placement, please confirm with the store or us. ■ The catalog is of November 2017 and subject to change without notice.

### **[ Precaution for Construction ]**

■ Perform construction by securing a flat and solid floor without humidity on the groundwork. Insufficient construction environment may cause a gap in the joint, push-up, or smell after construction. ■ Construct after confirming the direction of an arrow printed on the back side of the carpet tile. Constructing the carpet tile towards a wrong direction may result in an odd hue. ■ Perform construction by following the attached interior elevation by confirming the part number and quantity stated on the packing case. ■ During the construction, prohibit the trespassing of those other than related floor construction personnels in order to prevent defacement or accident caused by other subcontractors. ■ Start construction after leaving the carpet tile in a room temperature after a while and avoid a sudden environmental change during the construction. Difference between the room temperature and carpet tile temperature may cause a gap in the joint, push-up, etc. not only immediately after the construction but also as a latter event. ■ Keep the pile from being bitten in the joint as it may cause a gap in the joint or a difference in joint level. ■ After construction, the carpet tiles may come off when an excessive stress is given by conveying a cart or moving furniture over them. Protect the carpet tiles with a sheet of plywood upon conveying heavy load over them. ■ Upon cleaning to transfer, instruct the cleaning worker to not spilling bleach or rust removal. This may cause pile discoloring. ■ Upon disposing the

remaining materials after construction, entrust the disposal to an authorized industrial waste disposal operator. Upon incinerating packing cases, etc., dispose them following the prefectural ordinance. Burning the carpet tiles generates hazardous gas. ■ Use after thoroughly investigating the floor material as it may affect the floor material.

### **[ Precaution for Cargo Handling/Storage ]**

■ Unpack and store the carpet tile on a flat place without sliding them. Keep them from getting wet due to the overloading or rainwater. This may be the cause of the pile damage such as deformation, discoloring, or pollution, etc.

### **[ Precaution for Operation and Maintenance/ Use ]**

■ Mend the carpet tiles immediately in the case of removal, warp, tangled joint pile, etc. Leaving them without mending may affect the overall carpet tiles to damage their fine sight as well as incurring a falling accident. ■ In a spot exposed to the sun for longer hours may cause discoloring or fading. Use curtain, blind, etc. as a sunshade. ■ In the event of adhesion of dirt, wipe off with care immediately lest it should not spread over. It becomes harder to remove as time advances. Also, some of the contaminants may be non-removable. ■ Upon maintenance, use a detergent for carpet cleaning. Use of a chlorine agent may cause discoloring or fading of the pile. ■ The carpet may get dirty to cause discoloring or fading due to some kind of leg rubber of furniture, rubber product such as rubber mat, paint, preservative, insect repellent, etc. Make sure the carpet tile does not contact them directly. ■ Local loading due to a pair of high-heeled shoes or furniture may leave a dent on the carpet tiles. ■ Perform regular maintenance with an electric cleaner or a vacuum cleaner in order to keep its fine sight. In a place where earth and sand is expected to be brought in, place a mudguard mat, etc. at the entrance to keep the room from earth and sand. ■ Heat may cause discoloring/melting of carpet tile. Avoid frictional heat from tobacco or wheel, scattering spark, etc. ■ Upon removal of a dirt which has become a stain in part, use a stain remover or detergent in accordance with the cause of the dirt. Wrong selection may be cause of discoloring. ■ It comes with a material-unique smell. Be sure to ventilate. ■ Replacement is available in the case of product defect or malfunction upon purchase. Provided, however, we are not liable for such replacement in

## <For Product-related Inquiries>



5-12 Futaaramachi, Utsunomiya, Tochigi 320-0804, Japan

Tel. +81-28-634-7643 FAX. +81-28-636-2803 E-mail : info@stile.co.jp URL : www.yokose.com

2025.04



GRAPHIC **CARPET**

[stile.co.jp](http://stile.co.jp)